

---

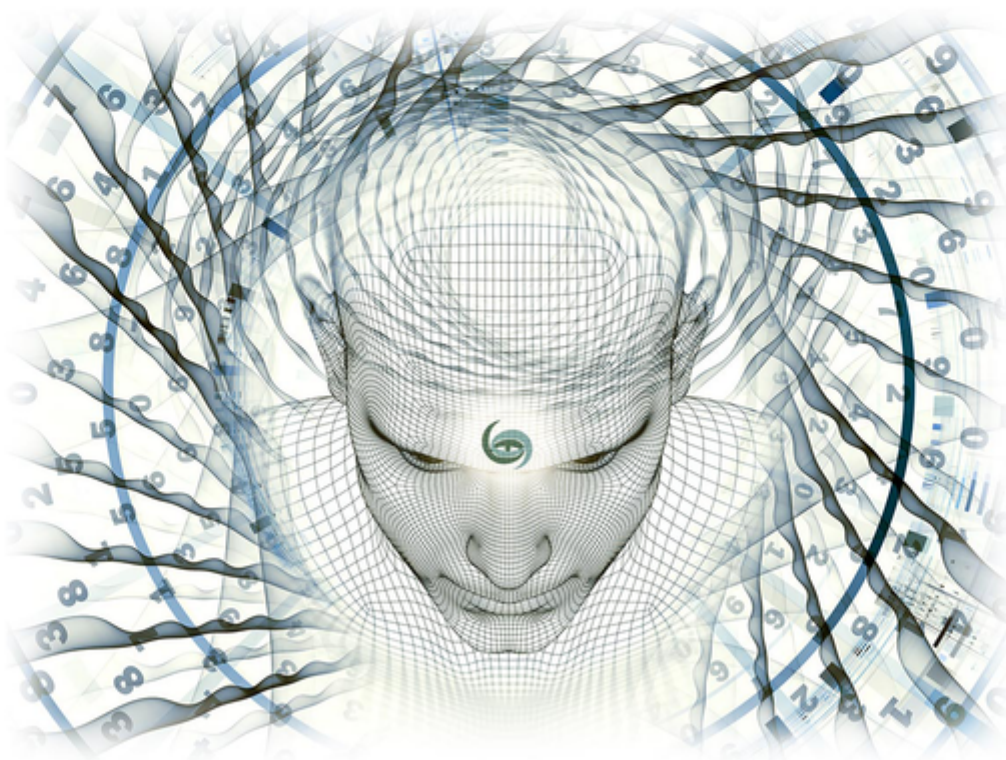
# NUMEROLOGY

---

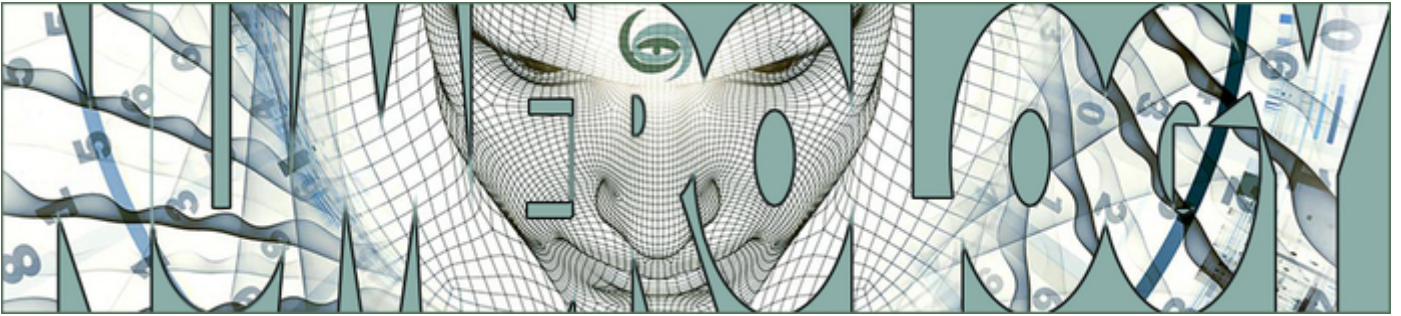
## PERSONALITY PROFILE

Anthony Mercier

Numerologist Hans Decoz



[worldnumerology.com](http://worldnumerology.com)



## **THE POWER AND LIMITATIONS OF NUMEROLOGY**

*Numerology is an art thousands of years in the making. Like any Metaphysical science, it hinges on the understanding that all things are interconnected. Your numerology profile analyzes the connection between the letters and numbers linked to you, revealing your talents, strengths, weaknesses, emotions, preferences, and a range of other qualities.*

*To use an analogy, think of numerology's nine single-digit numbers as nine tubes of paint, each a distinctly different color. Imagine you are a work of art painted by a master artist who used every color available to create your image. The depiction is unique and complex: a fusion of bright and subdued colors, shapes and shadows, light and reflection, subtle and bold textures. The deeper you look, the more you perceive and appreciate the many layers that makeup who you are.*

*A comprehensive numerology profile, along with your honest reflection, can be a powerful self-help tool in identifying underlying traits and new possibilities. The better you know yourself, the more control you have over life's changes and the greater your potential for a successful, fulfilled life. Numerology is not infallible, nor does it promise to answer every question, but I feel confident you will find many things to contemplate in the following pages. You are unique, and so is your Profile. We hope you enjoy your reading.*

*By the way, you can download the app to any device (sign in with your original email and password, no additional charge). To view samples of all our readings click **RESOURCES** on the menu bar of the app.*

*Hans Decoz and World Numerology*

## **YOUR PERSONALITY PROFILE**

*Conventional numerology readings focus on two aspects of your chart: You and Your Future. Our Profile takes a different approach by adding a third angle, Your Path. Just as your DNA determines your physical body, a blueprint of your personality is an inborn part of you from the very beginning.*

*Your Profile begins with insight gleaned from your name because that is where we learn WHO you are. It describes the talents, strengths, and other distinct characteristics you were born with. Just as your physical body grows and changes with time, so does your personality. Your personal evolution begins at the moment of your birth. From that point on, the choices you make, the goals you set, your environment, opportunities, challenges, the influence of others, and a thousand other factors alter who you become.*

*Your Personality Profile begins with an overview of the combined influence of the core numbers derived from your name: your Expression, Heart's Desire, and Personality. This has never been done before and is perhaps the most dramatic improvement in Decoz' latest work.*

*We hope you will take time to read and reflect on the information below. Many aspects become clearer with time and during subsequent readings. We wish you the best on your journey.*

## **SUMMARY**

**Birth Name is Anthony Joseph Mercier**

**Short Name is Anthony Mercier**

**Birthdate is July-21-1983**

**Reportdate is May-03-2020**

### **Your Core Name Numbers**

Your Expression is 16/7

Your Heart's Desire is 17/8

Your Personality is 17/8

Your Heart's Desire - Personality Bridge is 0

### **The Path You're On**

Your Life Path is 13/4

Your Birthday is 21/3

Your Life Path - Birth Day Bridge is 1

Your First Challenge is 4

Your Second Challenge is 0

Your Third Challenge is 4

Your Fourth Challenge is 4

### **The Path And You**

Your Life Path - Expression Bridge is 3

Your Maturity is 11/2

First Period Cycle is 7

Second Period Cycle is 3

Third Period Cycle is 3

First Pinnacle Cycle is 1

Second Pinnacle Cycle is 6

Third Pinnacle Cycle is 7

Fourth Pinnacle Cycle is 1

### **Specifics About You**

Your Rational Thought is 1

Your Balance is 6

You have a Hidden Passion of 5

You have a Karmic Lesson of 0

Your Cornerstone is A

Your Subconscious Self is 9

Your Physical Plane Of Expression is 19/10/1

Your Mental Plane Of Expression is 35/8

Your Emotional Plane Of Expression is 42/6

Your Intuitive Plane Of Expression is 10/1

**How Your Current Name Affects You**

Your Minor Expression is 15/6

Your Minor Heart's Desire is 6

Your Minor Personality is 9

## PART I: ABOUT YOU

*Your Personality Profile is based on your full name at birth, your current name, and your date of birth. Your full name tells us who you are; think of it as your numerology-DNA. Your date of birth reveals your path and the patterns of your personal growth.*

*We start this report by looking at the most important numbers derived from your full name to throw light on who you are as a person.*

### HOW YOUR NAME NUMBERS STACK UP

*Anthony, we begin by taking a quick snapshot, a look at the influence and meaning of the three core numbers derived from your name. Your Expression number is the sum of the value of all the letters in your full name at birth. Your Heart's Desire is the sum of the vowels. Your Personality number is the sum of the consonants. These three numbers are closely linked and influence one another.*

*All the numbers derived from your name reflect YOU. They are a blueprint of your talents, shortcomings, character traits, and other qualities. You should realize that this is a limited perspective. Later chapters focus on the challenges and opportunities you will encounter on your path, and attributes you may acquire as time passes.*

*This first chapter is like a glance from a distance, followed by three chapters that explain the meaning of each number in more detail. We will gradually build a more complete picture of the complex and unique individual you are.*

#### **Your Core Name Numbers are 7, 8, 8**

The idealistic, intellectual, contemplative and often shy 7 stands apart from all other single-digit numbers in one very important way. The 7 is a potential gateway to the fulfillment and wisdom that Kabir, Gurdjieff, and other masters talked and sang about. It is the seeker. It does not take anything at face value, and never gives up on the big questions, "Who am I? Why am I here?" Your Expression number is 7. This may come as a surprise to you, because this most spiritual/philosophical of numbers is flanked by two very different influences, the 8 Heart's Desire and 8 Personality. This is similar to a hermit having Donald Trump and Gordon Gecko as neighbors - except all three exist within you.

The 7 and 8 have nothing in common, but they will compete for your attention throughout your life. Your 8 Heart's Desire gives you drive, ambition, and a good sense of business. You are authoritative and do not step

aside for anyone. Unlike the 1, you are not necessarily stubborn, but you are dogged and determined when it comes to reaching your goals. This outgoing, forceful number also appears as your "outer" Personality number (the part of you others notice when you first meet). This largely obscures the serious, inquisitive idealism of your 7, a number that is not at all ambitious.

Anthony, your challenge is to reconcile the obvious contradictions in this combination. Understanding the position each number holds in your chart can help.

The 7 Expression is like a blueprint. It lays out the ground rules, sets limitations, and determines the function and form of your life ahead. It describes your talents, abilities, and shortcomings, particularly in the way they affect your career and productive life. The 7 is contemplative, analytical, and somewhat solitary. A 7 in this position suggests you need to learn from life as well as from books. Your ultimate goal is to attain insight and understanding, and to become a beacon of light for others, without becoming dogmatic or burdened by religious concepts.

Your 8 Heart's Desire is a good balance to the internal nature of the 7. More than any other number, the 8 has a pragmatic, results-oriented attitude. It pursues big goals and needs to be in charge. Be mindful, however, not to allow your dynamic 8 energy to overshadow your inquisitive 7. You may be tempted to surrender to the capitalistic, dog-eat-dog mentality of an Ayn Rand disciple.

Ignoring the needs of your 7 Expression can be detrimental. If you are unable to balance these opposing influences, you may find success financially or in other ways, but you are unlikely to find true happiness and fulfillment. The emptiness resulting from an unfulfilled 7 drains gratitude and joy like a vacuum. It is crucial that you find a balance. Devote a fair amount of your time and energy to the mystery of life, in study and contemplation.

In your personal life, romance and long-term commitment are possible, especially if you find a partner with upbeat, dynamic numbers. Someone who does not take things too seriously would be a good fit. A partner with a 3 (upbeat and creative, with a sense of humor) and a 5 (dynamic, adventurous, versatile) could soften the sharp angles of your 8 and uplift the serious 7.

You should probably marry or commit to a relationship later in life, preferable after age 30. This would give the 7 and 8 time to find a comfortable balance.

Now let's look at each of your core numbers individually.

## **THE EXPRESSION**

*Your Expression number, calculated from your full name at birth, reveals the orientation or goal of your life. Some numerologists refer to this as your Destiny number because it represents a lifelong target at which you are aiming. Thus, the Expression number, to some extent, reveals the person you aim to be.*

*Your Expression is the most influential of the three characteristics that make up who you are. It is also the number with the most influence on your choice of career, although other aspects are important as well.*

## Your Expression is 16/7



You are gifted with an analytical mind and an enormous appetite for the answers to life's hidden questions. You have a strong interest in exploring scientific matters, philosophy, and even mysticism. You possess clarity and persistence in your search for truth. You can be a great researcher, educator, and philosopher. You are driven by a desire for knowledge and truth. You must learn to discriminate between illusion and reality, but you are well equipped for this task. Your fine mind offers insight into the veiled mysteries of life. You also possess a considerable amount of perspective. Somewhere inside you, you are aware of a peaceful place that you call upon during difficult times.

, you need time to be by yourself. Too much social interaction causes you stress. You need your privacy and a place that can be shut off from the hustle and bustle of life. You tend to keep your thoughts to yourself and are secretive. Unless your 7 expression is balanced by extrovert characteristics (usually revealed by the numbers 1, 3, 5, and 8), your introversion may pull you deeply within yourself, even cutting you off from others.

You have a strong dislike of the superficial and mundane. You are often surprised by the lack of understanding or depth of knowledge of others, many of whom do not take the search for knowledge as seriously as you do. This can cause you to be critical of others, and even cynical about life in general. The more cut off from others you become, the more hidden are your motives. Once you develop understanding of people and life, your advice and counsel will be sought by those around you who need your wisdom.

You love to specialize your knowledge and develop great depth within your field. You are a perfectionist. You should complete your studies early in life and not be driven too hard by a desire to be successful. Let things come at their own pace, be open to opportunity, but remember your rewards, satisfaction, and contentment come from a higher source.

Sevens can be distant and aloof. When dominated by their darker characteristics, they can be unfaithful, dishonest, and cruel. Contemplation, meditation, and the softer, finer vibrations of life can restore your sense of harmony and keep you on the path to peace and balance.

You have a logical mind. Your analytical skills cause you to approach a problem in a detached, surgical kind of way. Researchers, analysts, investigators, inventors, technicians, scholars, lawyers, bankers, watchmakers, priests, philosophers, theologians, and administrators in some scientific or technical field are among the vocations 7s are drawn to.



## **THE HEART'S DESIRE**

*The Expression number described above points to a more productive side of your life. Your Heart's Desire reflects a deeper, inner you; it suggests an underlying urge, your true motivation, and the general intention behind many of your actions. It reveals the environment and lifestyle you prefer, as well as your likes, dislikes, and the type of people you are drawn to. Consequently, it dramatically influences the choices you make in life.*

*It makes sense that the vowels of your name are the foundation for your Heart's Desire. Vowels are the peaks and valleys of a language. Notice how vowels leave your mouth in a free-flowing breath. Try it: Aaaa.... Eeee.... Oooo.. Consonants though, are cut off either at the beginning or in the end.*

*You might say that it is in the flow of your breath that you express your deeper self.*

### **Your Heart's Desire number is 17/8**



You want success in its fullest meaning -- wealth, power, and material comforts. You have an enormous ambition. You dream of big projects, great undertakings, and rewards. You are a visionary. You see the horizon and the promise. In general, you also see the methods necessary to fulfill that promise. But you are not especially good with details; you need others to help you deal with the smaller parts of the picture.

Your challenge is to make full use of the full spectrum of your abilities, as indicated by your other core numbers. In the same way, you must bring forth the best from others and orchestrate their talents toward the realization of your vision. In short, you must lead by example, demonstrating the standard for commitment, determination, and excellence.

All of this requires effort on your part. You will meet with obstacles and difficulties. Your determination and commitment will be tested. But you have the power to overcome every obstacle you face and accomplish the goal you've set for yourself.

Your task in life is to learn to use power in refined and elevated ways. The expression and use of power are directly related to one's personal evolution. The more primitive uses of power rest with violence and the threat of deprivation. The higher expressions depend upon your capacity to care for and nourish the people and projects in your charge, giving each exactly what is needed at the appropriate time and in appropriate amounts.

You have a creative mind and an unusual approach to business and problem-solving. You need to cultivate your ability to evaluate others. It is essential for you to be involved in a project that challenges you and

offers the potential for rewards. When you are uninvolved or unoccupied with a worthwhile task, you can become deeply despondent, depressed, and frustrated. You are the perfect example of the old platitude, "Idle hands are the devil's workshop."

Without a challenge, you can lose balance in life and become selfish, cruel, and even self-destructive. Disappointments become shattering, causing terrible consequences in self-image and self-love. Perspective is everything for you. You have a natural talent for balancing the spiritual and material planes.

You need to cultivate courage and stamina. Courage is a choice. You need to decide to be brave in the face of fear. A balanced 8 is among the most powerful and satisfying of numbers. It is the spirit of the true survivor, able to bounce back and achieve a greater victory.

## **THE PERSONALITY**

*The consonants of your full name at birth are the foundation of your Personality number, which is a little like a narrow entrance hall to the great room that is your true nature. It's the outer layer of your personality, the part you feel comfortable sharing. With time and trust, you invite others into the deeper aspects of your nature.*

*Your Personality number serves as a censoring device in terms of what you send out, as well as whom and what you allow to approach. For this reason, your Personality is usually narrower and more protective in its definition than the real you. It also gives an indication of how others perceive you.*

**Your Personality number is 17/8**



You appear strong and powerful. You have an impressive personality and can influence and even intimidate through sheer force. You have natural authority. Your competence and enthusiasm attract people with resources. You radiate confidence. People defer to you because they sense your sureness and effectiveness. You also exude a kind of controlled benevolence. People sense that you are generous, once you are convinced of the worthiness of the cause.

It is important for you to dress well. You radiate a kind of raw power and able-ness which needs to be refined and enhanced by your clothing. You may even dress a bit flashy, but that will not harm you. Quality is among your highest priorities and should reflect in your clothing. Although most eights have a strong constitution, they can be prone to indigestion, ulcers, and heart disease due to their reckless eating and drinking habits and their propensity to be workaholics.

Your Achilles heel is your capacity for an egocentric attitude. The negative side of your personality can cause you to be ruthless, greedy, and intensely lonely. Conversely, you can be spontaneous and excited. You are essentially warm and jovial. In your heart of hearts, you want everyone to be as excited and as happy as you. Those who are around you often sense this. Your coworkers and employees usually like you.

## **THE HEART'S DESIRE - PERSONALITY BRIDGE**

*A Bridge number is based on the numerical difference between two closely related aspects in your chart. It is the gap you need to "bridge" in order to create a more harmonious bond between the two areas.*

*The following Bridge number connects your Heart's Desire and Personality numbers. It suggests things you can do to help your deeper self to align more closely with your personality; the "outer" you that is apparent to others.*

*With a little exaggeration, you could say that your Personality number is somewhat like your mask; it's a more superficial aspect you reveal to the world. You can imagine how much more comfortable and less inhibited the experience of life becomes when you can align your authentic self with the personality you show to the world.*

### **Your Heart's Desire - Personality Bridge number is 0**



The single digit values of your Heart's Desire number and your Personality number are the same.

This is considered fortunate. You are a WYSIWYG: "What You See Is What You Get."

You easily make people feel comfortable around you. However, if your Life Path number or your Expression number are also identical to your Heart's Desire number and your Personality number, your chart

may be somewhat off balance. This may cause you to push the aspects of the repeated number to excess.

Read your Heart's Desire number again and ask yourself if you have not focused too much on the aspects described, at the cost of a more balanced approach.

## **PART II: THE PATH YOU ARE ON**

*If there was ever a moment of transformation, it was the moment of your birth. In that instant, you stepped into a new reality - the reality of human life and human consciousness. Even at that moment you were a person with your own unique character, as unique as your DNA. The previous chapters focused on YOU, the person you are, as revealed in the letters of your name. It is now time to look at your Path, the road you walk through life, using the numbers found in your date of birth.*

*Your first breath marked the beginning of your journey on the road we call your Life Path. It makes sense, then, that the most important number in your numerology chart comes from the date of your birth. Your Life Path number gives a broad outline of the opportunities, challenges, and lessons you encounter throughout your life. It also reveals the strengths, specific talents, and characteristics you were given to help you overcome challenges and evolve into the best you can be.*

### **THE LIFE PATH**

*Your Life Path number is considered the single most significant information available in your Personality Chart. It is derived from the total of all numbers found in your date of birth. However, it is important to keep in mind that the aspects described in the next few chapters will either complement, supplement, or sometimes weaken the attributes revealed in numbers derived from your name.*

#### **Your Life Path number is 13/4**



You are practical, down to earth with strong ideas about right and wrong. You are orderly and organized, systematic and controlled, you are decisive and methodical employing a step by step rational approach to problems solving. Once committed you do not give up easily. You are not one for "get rich quick" schemes. Rather you use hard work and long hours to build a business or career- you seek to establish a solid foundation.

Precise, tenacious and persevering, you have great potential for success, but only after putting out effort and overcoming the limitations you so often encounter. Justice and honesty are sacred to you. You are reliable and dependable, a cornerstone in the community.

Though not an idealist, you are willing to work for a better world in a realistic way. However, you can be rigid in your ideas and sometimes too quick in judging your fellow man. You are loyal to those you love and work well with others. . It is important that while being part of a team you have your own responsibility and well- defined task, you perform better when your responsibilities are not overlapping with those of others.

You have to be careful not to be bossy and rude. You possess rare discipline and perseverance and not everyone can keep up with you.

You can handle money carefully and like the security of a nest egg. Your love of work often leads you into a career early in life. Because of your methodical nature you can easily become rigid and stuck in convention. You can also be overly cautious when changes are necessary, this can cause you to miss opportunities that present themselves. You must cultivate flexibility in your character. You are well suited for marriage and often become a responsible loving parent. However, anything that violates your profound sense of order, such as separation or divorce can be a shattering experience for you. You easily become obsessed and even vengeful, seeking your own definition of justice.

You are courageous and a true survivor. You are a builder and the foundation of any enterprise. Your hard work and practical, traditional values pay off to provide you with the rewards you seek and deserve.

## **THE BIRTH DAY NUMBER**

*The day you were born bears great significance in understanding who you are and where your talents lie. Your day of birth indicates special talents you possess. It gives us an indication of the approach you will take toward the goals, opportunities and obstacles you encounter on your Life's Path.*

**Your Birth Day number is 21/3**



You have a highly-developed creative talent. You are an artist at heart. You could excel in writing, visual, or performing arts. If you are not professionally involved in one of these areas, you should consider taking up art as a hobby. You are highly-imaginative, quick-witted, and possess the gift of gab. You have great enthusiasm. Others find you inspiring and charming. You are a wonderful salesman. You are friendly and sociable, affectionate and loving. You possess a good deal of charisma. You can also be moody and subject to rapid ups and downs.

You have a fine sense of harmony and art in everything that you do -- from your dress to the way you decorate your home. You have a gift with plants and flower arranging. Be careful not to waste time and energy on trivial matters. Keep your long-term priorities in perspective.

## **THE LIFE PATH - BIRTH DAY BRIDGE**

*Your Life Path and Birthday numbers are closely connected and influence each other. This Bridge explains how you can make the connection between them more harmonious.*

**Your Life Path - Birthday Bridge number is 1**



Your Life Path and Birth Day Bridge is 1, which combines individualism and personal power. Strive to recognize your moments of inhibition and question their source. Work on becoming franker and more direct. This has less to do with fear or insecurity than with trusting yourself and your instincts.

Consider the way most children lack inhibition or hesitation when responding to others. They are often painfully honest, but entirely without malice. Find a balance between refreshing directness and unnecessarily hurting another's feelings. Personal power is not the result of gaining authority, admiration or superiority - it comes from knowing who you are.

## **CHALLENGES; YOUR FIRST CHALLENGE**

*You face four specific Challenges in your lifetime. For many of us, the same challenge is repeated, while others have four distinctly different lessons to learn.*

*These Challenges place you in situations that require you to face the particular lesson at hand. This provides an opportunity for you to learn or better integrate personal traits that will benefit you during the lesson, and throughout your life.*

*The four Challenges in your chart will influence you during the periods of your life listed below. They are found within the lower half of the star-shape in your numerology chart. The First Challenge is shown on the left, the Second Challenge on the right, the Main or Third Challenge is placed in the middle, and the Fourth Challenge is located below that.*

*The duration of your First Challenge usually lasts from birth until age 30 to 35.*

### **Your First Challenge is 4**



You tend to be disorderly and disorganized. You are impractical and tend to fantasize about projects or possibilities that have little value or future. You must learn to discriminate between iron balloons and those that will fly. You have difficulty finishing projects because your vision becomes chaotic and loses track of the path ahead.

You have to learn to be aware of the details. Keep your environment clean and orderly. Be efficient.

You have the ability to be practical and organized but you must learn their value. This will cause you to incorporate them into your daily life and give you the basis for success.

This is the challenge of building a lasting foundation for your life. You will need perseverance and repeated effort. Get-rich-quick schemes will likely backfire; persistent effort is the key to your future happiness.

## **THE SECOND CHALLENGE**

*Your Second Challenge is in place from approximately age 30 through 55.*

### **Your Second Challenge is 0**



This is a less demanding challenge. Growth is allowed to take place without one particularly serious obstacle. This does not mean that there will not be challenges on your path, but there is no single and consistent challenge during this period. However, you are being challenged to stay faithful and focused on your highest ideals.

There is an opportunity to go deeper within yourself, and discover the inner being that is you.

## **THE THIRD AND MAIN CHALLENGE**

*This Challenge carries much weight and will be felt throughout your life. For that reason, it is also called the Main Challenge.*

*As you master this challenge and incorporate its positive aspects into your character, your life gradually feels more in control. There is a chance for great reward implicit in this challenge. In short, it may offer the secret to your success.*

### **Anthony, you are repeating Second Challenge**

## **THE FOURTH CHALLENGE**



*Your Fourth Challenge is most strongly felt during the latter part of your life, beginning at approximately age of 60.*

**Anthony, you are repeating Second Challenge**

## **PART III: YOUR PATH AND YOU**

*We have focused on the letters of your name and the numbers from your date of birth. We will now look at numbers in your chart derived from the combination of both your name and the date of your birth. Acquiring the attributes described in the next few chapters will help smooth your progress. As you learn more about yourself, you may begin to recognize traits you were previously unaware of.*

### **THE LIFE PATH - EXPRESSION BRIDGE NUMBER**

*This Bridge has the potential to "close the gap" between the Life Path and the Expression numbers. The chapter explains how you can make your talents, strengths, and specific abilities (your Expression number) more readily available and fitting to your ma*

#### **Your Life Path - Expression Bridge number is 3**



Your 3 bridge suggests there could be a distinct gap between your understanding of what your talents and strengths are, and the way you approach the opportunities and challenges you encounter. You likely experience a reluctance to grab opportunities when they come your way, preferring to hold on to what you know rather than reaching for something new and different.

This is not due to personal preferences, but to a lack of confidence, which can also impair your ability to express yourself with clarity and conviction. You become more confident and communicate better if you are able to relax and have faith in yourself. Loosen up a bit. Be more generous to yourself and less concerned with others.

### **MATURITY NUMBER**

*Your Maturity number indicates an underlying wish or desire that gradually surfaces at around age 30 to 35. A direction begins to emerge as you gain a better understanding of yourself. With this self-knowledge comes a greater awareness of who you are, and the direction you want to set for your life.*

#### **Your Maturity number is 11/2**



As you mature, you will discover that you possess a growing talent for understanding and working with other people. Your ability to influence others through tact and diplomacy will grow. These talents will further you along in your career or business. You will become increasingly shrewd and will learn the art of discrimination. Your sensitivity to the needs and desires of others improves dramatically. You will be able to evaluate their motivations with a growing clarity and uncanny accuracy.

You find you can get more done by persuasion and gentle guidance than by force. You may well have to learn to assume the role as the power behind the throne. Your influence is less public, and you may not always receive the public recognition you deserve. However, your satisfaction comes from seeing the fruition of your own ideas come about, the result of teamwork and cooperative efforts.

If you already have many 2s in your chart, especially in the core numbers, you may become overly sensitive, a characteristic you will have to keep in check. If you have few 2s in your chart, the influence of your Maturity Number will greatly increase your ability to work harmoniously with other people.

## **PERIOD CYCLES; YOUR FIRST PERIOD CYCLE**

*Like most stories, there are three distinct stages of your life. Your First, Second, and Third Period Cycles come from your month, day, and year of birth respectively. Together they form the foundation of your Life's Path.*

*The First Cycle, located on the left of the graphic, begins in childhood and lasts through your late 20's. It's a quest for knowledge and identity while you cope with the powerful forces that are present in your environment. These forces include your parents and the socio-economic conditions of your family, for example.*

*The Second Cycle is found inside the diamond-shape and covers the middle period of your life, bringing about the slow emergence of your individual and creative talents. This cycle begins in the early and mid-30's while struggling to find your place in the world. The late 30's, 40's, and 50's, bring a greater degree of self-mastery and influence over your environment.*

*The Third Cycle, on the right of the graphic, starts approximately age 55, and represents a flowering of your inner self as your true nature comes to fruition. It is during this period that you have the greatest degree of power and self-expression.*

*Your First Period Cycle runs from birth until your mid 30's.*

**Your First Period Cycle is 7 and lasts until age 14**



The 7 is probably the most challenging and difficult early Period cycle because it tends to set you apart from others, which can be lonely. Even as a child, your inner life is so compelling you likely immerse yourself in it. Although you may find it difficult to share your deeper feelings with others, this cycle produces some of the brightest and most original thinkers.

Escaping into your fantasies at an early age gives you a rich and textured intellect. You may or may not be aware of this, but others, including the adults in your life, are often in awe of the things you say and do. You reach a level of maturity early, assisted largely by your intuition and a mind that penetrates beneath the surface of any subject. Your first 25 to 30 years are a period of inner development that will benefit the rest of your life.

## **SECOND PERIOD CYCLE**

*Your Second Period Cycle runs from your mid 30's until your late 50's.*

### **Your Second Period Cycle is 3**



The middle part of your life is a time of heightened self-expression and social support. Abilities you possess in the arts, especially in writing, acting, or dance, are enhanced.

You are more social than you have been in the past, and others are attracted to your charm and charisma. Although this is a time of maturing, you feel as though you are becoming mentally younger and more creative. Staying focused on practical goals may be challenging.

## **THIRD PERIOD CYCLE**

*Your Third Period Cycle covers the later part of your life, starting in your early 60's.*

### **Your Third Period Cycle is 3**



The latter part of your life finds you "growing older" more slowly than your peers. The excitable, scattered, creative energy of the 3 can resemble an elixir from the fountain of youth. However, there is a tendency to waste time and energy on unproductive projects.

You have many original ideas, but you may have difficulty differentiating between lead balloons and those that can fly. Your 3 energy is uplifting and motivating, which draws people to you. However, staying focused may be a challenge, which could affect your ability to reach your goal.

Your need to express yourself through art, especially the verbal or performing arts increases with age.

## **PINNACLE CYCLES; YOUR FIRST PINNACLE CYCLE**

*Although Pinnacle Cycles and Period Cycles are both derived from your date of birth, they differ in the way you experience them. Period Cycles, described above, reflect internal stages of growth. Pinnacle Cycles represent the external influences you encounter in life.*

*Pinnacles reveal general conditions and events you experience during each period, such as your environment, social conditions, relationships, and changing circumstances. Pinnacles reveal how you might respond to these influences and how they will affect your ever-evolving personality.*

*The transition from one Pinnacle to the next is usually strongly felt. You begin to feel the transition from one Pinnacle to the next approximately two years in advance. The latter part of that two-year period can be particularly strong. You will likely make life-altering decisions, such as marriage, a job or career change, or major changes in your personal makeup.*

*Knowing and understanding your approaching Pinnacle number prepares you for the changes ahead. Perhaps the most strongly felt change is the transition from First to Second Pinnacle, which usually takes place in your late 20's or early 30's (the exact date depends on your Life Path number). This is usually a difficult transition but once crossed, provides a clear sense of direction and a firmer sense of identity.*

### **Your First Pinnacle cycle is 1**



This is a period requiring much independence, courage, resiliency, and initiative. You must bounce back after many difficult experiences. The challenge of this Pinnacle is to gain will power. There is not a lot of support from others or from family. You must draw from your own strength. You will have to guard against self-pity or surrender. Keep focused on your dreams. This Pinnacle will require an iron will to keep hold of your goals, and also the flexibility to maneuver around difficulties, and bend with the winds of adversity.

This is a period of rapid self-improvement and growth. You will be forced to use every talent and capability you possess. You will need to be resourceful. You must continually put out effort, but with it comes great reward. Without it, there is no accomplishment nor satisfaction, only a negative attitude toward life. Be careful not to become too self-centered, headstrong or self-important. Be strong but flexible. Be open to the counsel of others but make up your own mind.

The benefit of this Pinnacle number is a strong sense of your individuality and strength. You will know what you are made of. There are many hidden gifts in this period, perhaps the greatest of which is faith. Your Pinnacle provides you with the characteristics of leadership, boldness, and daring. You will have many unconventional ideas and the skill and courage to make them a reality. Your abilities to manage and organize

people and institutions are greatly enhanced. You have vision and confidence in the worth of your dreams.

These characteristics provide great opportunity for success and major accomplishments.

## **THE SECOND PINNACLE CYCLE**

*Your Second Pinnacle Cycle lasts nine years and tends to have a considerable influence on your productive/professional life.*

### **Your Second Pinnacle cycle is 6**



Under this Pinnacle you will be very involved with family, friends, and your community. You will face an increase in responsibilities and duties, but you have a greatly enhanced sense of balance and perspective that allows you to handle emotional issues well. Your family demands much of your attention. Matters involving spouse and children require much security, love, and sacrifice. You are the centerpiece of your family, the one people come to for solace and understanding. You may feel an increased burden, as you carry the cares of many. You will experience a deep sense of being needed.

This Pinnacle is full of love, closeness, and warmth, but you must rise to the challenges that close relationships bring. Anthony, you must settle and bring harmony to personal conflicts between others. You are often the only one with perspective in a conflict. It is as if you are the keeper of justice, bringing understanding and compromise to situations that are polarized.

Under the influences of this Pinnacle -- especially at its outset -- people are often married or start families. Children are born, in-laws come into your life. You are the nucleus of a little world. You must maintain your dignity. This is a period that makes it easier to sacrifice, but you can overdo it, becoming a doormat for others to step on simply to maintain a degree of peace. Know your limits and maintain healthy relationships.

This is a fine period for growth in business and financial matters. You attract people with resources who can help to further your personal goals. Moreover, you are balanced in your approach to business affairs. This can bring many rewards.

Anthony, your heightened sense of harmony and your genuine compassion makes you an excellent counselor and healer, especially if you already have native talent in any of these areas.

Personal health matters can also surface, causing you to reflect on diet, exercise, and other health habits. Your desire to help others is also increased. But this can lead you to poke yourself into situations where you do not belong or delve too deeply into other people's personal affairs. Be careful not to meddle or interfere.

The 6 Pinnacle is a time of progress and growth as a full human being. You are capable of developing yourself in many different directions -- as a loving mate and parent; a sound businessperson; and as a pillar of your community. The time requires the balance you possess, since you can easily stretch yourself in too many directions and ultimately feel burned out by the demands in your milieu.

## THE THIRD PINNACLE CYCLE

*Your Third Pinnacle Cycle also lasts nine years. Like your Second Pinnacle, its effect is felt primarily in your career or business environment.*

### Your Third Pinnacle cycle is 7



This is a period of inner development and soul searching. Anthony, you will deal with the deeply important questions of personal existence and the meaning of life. You will need time to be alone to contemplate your inner world. This is a time of spiritual growth. You will experience a heightened sense of faith. The power of the universe will be the force that carries you along. During this 7 Pinnacle, spiritual growth, increased knowledge, and wisdom are the big rewards. The 7 Pinnacle provides the basis for contentment in older age, because you now begin to understand life more deeply.

You have an enhanced appreciation of poetry and nature. Walks in nature provide great therapeutic value and spiritual nourishment.

This is a time of specialization. You will pursue some course of development with fervor and focus. Your ability to concentrate will be greatly increased. Your desire to study in all forms -- reading, self-reflection, and contemplation -- will reach an all-time high. Your intuition is much more sensitive, making your path a little easier and more direct, since you know intuitively the appropriate next step.

Under this Pinnacle, you will become an expert in one particular field. Your capacity to penetrate the depths of a subject area is enormous. You will look below the surface in virtually everything you encounter. It is very possible that you will find yourself in a teaching role.

You must consciously work on your closer relationships, especially with your spouse and children. You must explain that your desire to turn inward is not an escape or an avoidance of those you love, but a deep need for knowledge. Your challenge is to avoid becoming critical or cynical of others. You can become so withdrawn from society that you look down on others. You may forget that you, too, are part of the imperfect human race. Sarcasm is the lowest form of communication, and a trap you could fall victim to.

Your desire to attain some high degree of perfection is sincere. But that pursuit can make you miserable if you lose perspective and fail to realize the relativity of human existence. Perfection is a Utopian goal, but an

unrealistic ambition. It can cause you to be dissatisfied with yourself and others.

The 7 provides the possibility of true refinement, insight, and a high degree of wisdom. This deep understanding is the basis for self-love and true happiness.

## **THE FOURTH PINNACLE CYCLE**

*Your Fourth Pinnacle Cycle lasts for the rest of your life.*

**Anthony, you are repeating Third Pinnacle**



## **PART IV: SPECIFICS ABOUT YOU**

*Although the following chapters deal with less dominant aspects of your chart, they are more narrowly defined and specific in the ways they affect you.*

### **THE RATIONAL THOUGHT NUMBER**

*Your Rational Thought number comes from combining the sum of your birthday number with the sum of your first name. It reveals the style or process you use when making choices or considering a problem. Are you a structured, logical thinker or do you ponder a question in a creative, abstract manner? Do you daydream or stick to deductive reasoning?*

*Your Rational Thought number suggests the general approach you take in your thought process.*

#### **Your Rational Thought number is 1**



You are an independent thinker, original, and not easily influenced by others. You tend to pursue a line of thought stubbornly, and you can be dominating in intellectual discussions. You tend to solve problems and plan projects with a straight-forward approach.

You rarely allow yourself to be distracted. Quite often, you realize at some later stage, that you did not pay enough attention to the available alternatives, and a project may find itself stuck with no chance of further advancement. When you find yourself facing such a situation your frustration tends to be considerable but of short duration. You simply start all over. You do not give up easily.

### **THE BALANCE NUMBER**

*Your Balance number provides guidance on how to best deal with difficult situations.*

*People experience a variety of internal responses to life's challenges. Some step back from difficult situations to ponder a course of action while others withdraw to avoid uncomfortable emotions. Some explode with anger but allow the outburst to pass quickly while others let their feelings linger.*

*Very often, these are conditioned responses that emerge without thought or analysis. With maturity and self-development, we incorporate new and more effective methods of handling situations we encounter.*

#### **Your Balance number is 6**



Anthony, your strength lies with understanding people and the underlying conditions of a conflict. But you can rely too heavily on friends and family to provide you solace instead of handling the situation directly and responsibly. You may be too likely to retreat to the good feelings provided by people not involved in your situation. Responsibility is the issue here, you helped create the situation in the first place, and are an essential part of the solution. Accept your role.

## **THE HIDDEN PASSION**

*Your Hidden Passion reveals specific strengths or talents that are available to you, such as a specific field of expertise or (as the name implies) a passion. Metaphorically, this talent or passion may be seen as having a power all its own to help shape your life.*

*Having a talent demands that you nurture and express it. Your Hidden Passion gives you the desire to develop and express your particular ability. In this way, it shapes your personality and guides your life.*

*In the graphic below, each square represents the number value of the letters 1 through 9. The top left square tells you how many ones are found in your full name at birth. The one next to it shows how many twos are in your name, and so forth. The number that is found most often in your name is your Hidden Passion. There can be more than one.*

### **Your Hidden Passion number is 5**

You love travel, change, and new challenges. You are highly adaptable and versatile. You have a talent for languages and are generally good with words. Writing, promotion, and public relations work suit you perfectly. You are resourceful and original. You have a good sense of humor and a quick tongue.

You are sensual and a bit impulsive. You love to satisfy your senses, which can get you into trouble. Overindulgence in food, drink, sex, and drugs are common among people with too many 5s -- six or more.

Your desire for freedom is extremely strong and it will take effort and discipline to stick with whatever it is you started. There is a tendency to give up a project or situation prematurely. Anthony, you may be interested in too many things, which can make it hard for you to apply yourself to one area successfully.

Commitment in relationships and your work is fundamental to your happiness. You may tend to wander from person to person, job to job, making depth of relationship or deep expertise difficult.

## **KARMIC LESSONS**

*Karmic lessons are recognized by the absence of certain letters in your name and describe areas we are*

*weak in that require recognition and effort to overcome.*

*The letters in your name point to talents and abilities that you possess; tools that are available to you. Missing letters imply tools that are unavailable, they must be learned and mastered during your lifetime.*

*You can have more than one Karmic Lesson or, if every number is represented your name, you don't have any.*

*Although you may feel you have learned to overcome one or more of your Karmic Lessons, you will continue to be challenged by them throughout your life.*

### **Your Karmic Lesson is 0**

You don't have any missing numbers in your name, therefore, you don't have a Karmic Lesson.

When you don't have a Karmic Lesson, your life's challenges and obstacles described under the chapter for Challenges, as well as chapters discussing Bridge numbers, tend to be a bit more intensified.

## **THE CORNERSTONE**

*The first letter of your first name gives an additional indication of your character, particularly in the way you approach opportunities and obstacles. This first letter is called your Cornerstone.*

### **Your Cornerstone is A**



You are ambitious, independent and have great drive, you are not easily influenced. You are mental and direct. You want to take charge. You have willpower and are resolute and purposeful. You have courage and boldness but may also be stubborn and willful.

Be more flexible and willing to listen to others.

## **THE SUBCONSCIOUS SELF**

*Your Subconscious Self is based on how many numbers are represented in your name, and indicates your ability to make the most of your talents and opportunities, especially when you face new, challenging, or even dangerous circumstances.*

### **Your Subconscious Self number is 9**



You are somewhat impersonal and may be difficult to get to know. You are not demonstrative of your affections, though you often have deep feelings and great compassion. You are competent and controlled in any situation.

You have no specific Karmic Lessons and are therefore not as vulnerable to Life's ups and downs as others.

## **PLANES OF EXPRESSION; THE PHYSICAL PLANE**

*You experience life on four different levels: physical, mental, emotional, and intuitive. Your Planes of Expression indicate how you function on each of these planes.*

*Your physical plane links you to the material world.*

*Your mental plane, like the emotional and intuitive, perceives the invisible world; the realm of thought and reason.*

*Your emotional plane is preoccupied exclusively with feelings.*

*Your intuitive plane gives you access to the insight and knowledge that comes effortlessly as if placed at the doorstep of your mind.*

*In each category, the number of letters, and their numerical value, gives an indication of which Planes of Expression are stronger in you and which are weaker. Each of us is dominated by one or two of the first three planes. The physical and mental are the most widely used, although a name dominated by emotional letters is not uncommon. The intuitive plane is usually the least utilized. A name dominated by intuitive letters is extremely rare but having no intuitive letters in a name does occur. This does not mean a lack of intuition but points toward a tendency to ignore or distrust intuitive insights.*

*The Physical Plane represents the physical letters in your name.*

### **Your Physical Plane of Expression is 19/10/1**



You are active and inspiring; you are daring in business and other areas of life. You have strong likes and dislikes and live according to your opinions. You are charming and witty but get bored easily. You work hard and determined and are very goal-oriented. You thrive on the combination of enthusiasm and challenges, the lack of which makes you dull and disinterested. You are like a flare, burning brightly for a specific duration, but must move on to other projects in order to sustain your excitement.

## THE MENTAL PLANE

*The Mental Plane is based on the mental letters in your name.*

### **Your Mental Plane of Expression is 35/8**



Anthony, you have a great talent as a business person. You can manage large corporations and institutions. You understand how to organize people and direct them toward some larger common goal. You are highly ambitious and competitive. Money and power are essential to your sense of identity and self-respect. You must guard against arrogance and superiority. You can be imperious.

You are demanding of yourself and others. You seek excellence in all things and refuse to settle for less.

## THE EMOTIONAL PLANE

*It is not uncommon for a person to have a name dominated by emotional letters.*

### **Your Emotional Plane of Expression is 42/6**



You are highly emotional, yet you possess a rare degree of balance to which you can turn. You love family and close friends as few people are able. You worry too much and feel responsible for other people's actions. You take justice and honesty with extreme seriousness; however, you may be too disciplined.

You have artistic talent. You like to help others more than most and are willing to sacrifice your own needs. You have an ability for teaching and healing. You need much love and can give the same in return. You are highly idealistic, and very committed once you decide upon your soul mate.

## THE INTUITIVE PLANE

*A name dominated by Intuitive letters is extremely rare. It is, however, not at all uncommon not to have any intuitive letters.*

### **Your Intuitive Plane of Expression is 10/1**



You are highly intuitive with flashes of insight. You probably attribute most of your thoughts to your mental capabilities, but in fact your insights come from another, higher resource.

## **PART V: HOW YOUR CURRENT NAME AFFECTS YOU**

*The influence of the short name (the name you use to introduce yourself, including your last name) is minor in comparison to your full name. Interestingly, the short name often compensates in some way for numbers, and their related characteristics, that are missing or out of balance in the full name.*

### **THE MINOR EXPRESSION**

*Your current name forms the basis of your Minor Expression number. It is usually the first and last name you commonly use to introduce yourself (not necessarily the name you received at birth).*

*The influence of your short name is minor in comparison to your full name. Interestingly, the short name often compensates in some way for letters or numbers missing in the full name.*

*The name you currently use, also affects how you feel about yourself.*

*If a name change takes place later in life for marital or for professional reasons, it adds or subtracts certain qualities. It can also focus and intensify existing characteristics or latent talents.*

#### **Your Minor Expression is 15/6**



Your short name adds love, warmth, generosity and genuine concern for others. It increases your concern for family and those less fortunate than you. You are better equipped to deal with duty and responsibility and even find greater satisfaction in it.

You want to do good in the world. You become more socially conscious and seek ways to better the plight of others.

Your artistic abilities are enhanced. You are more concerned with beautifying your home or engaging in healing and teaching.

### **THE MINOR HEART'S DESIRE**

*The vowels of the name you currently use to introduce yourself are the basis of your Minor Heart's Desire number.*

## Your Minor Heart's Desire is 6



Your short name increases your capacity to radiate warmth, solicitude, and kindness. You are more patient with others and a far better listener. Your willingness to carry the burden of others is increased.

Your Minor Heart's Desire increases your creativity and your domestic instincts. Women feel better at home; men feel more comfortable in the roles of husband, father, and provider. Your sense of harmony and social consciousness are enhanced. You are better able to settle disputes.

Six is the most balanced of all numbers, in harmony with all other numbers. Very few people with 6s in prominent places stray very far from their true natures.

## THE MINOR PERSONALITY

*Your Minor Personality is based on the consonants of your current name and reflects, at least to some extent, how you think, or hope, others might perceive you.*

## Your Minor Expression is 9



You are elegant, graceful, and charismatic. Many admire you. You have the kind of stature that pulls people to you or repels them intensely. Some are jealous of you and may seek to belittle you. You may encourage this to some extent by the amount of arrogance you radiate.

You are kind and sympathetic, helpful and compassionate. Behind the controlled and calm facade, you are sensitive, vulnerable and emotional.

You have excellent taste. There is a good deal of artistic talent in you that shows in your home environment and your clothing. You tend to see yourself as a guardian of society, a benevolent leader, guiding and directing your community toward a better world.