

YOUR COMPANY

YOUR COMPANY NAME

12345 Main Street
Anytown, TX 12345
USA

+1 1234567890

www.your-website.com

Dear Fellow Numerology Enthusiast

You can write your own introduction here.

It is suggested to keep it short, but you have about a page.

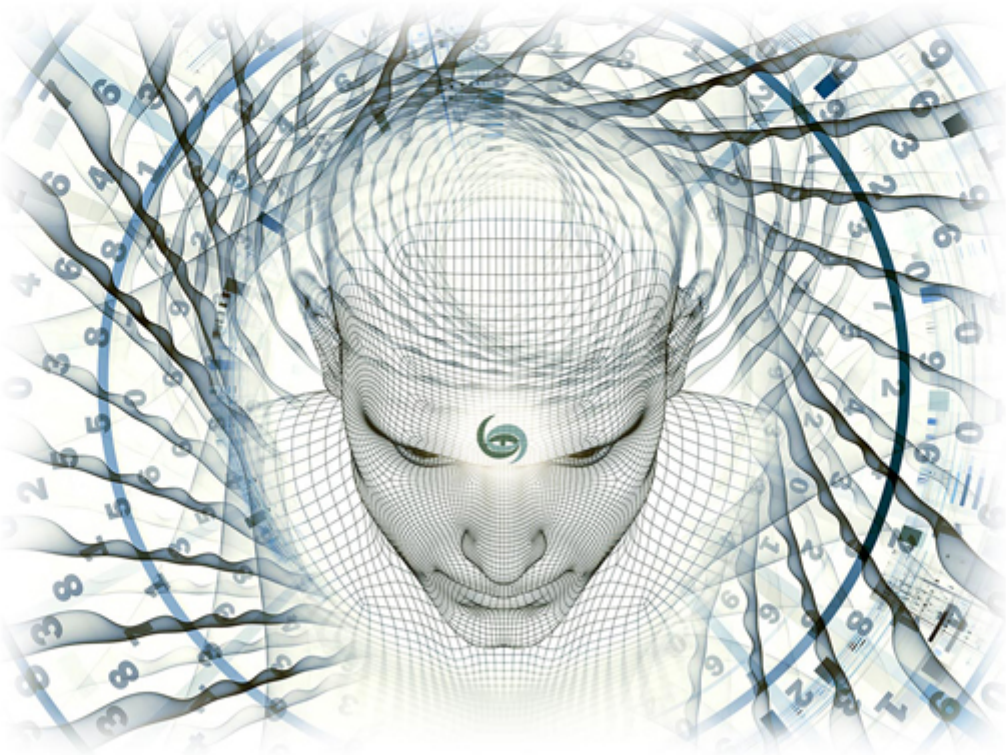
I hope you will find this report beneficial on your on-going search for self-knowledge and self-awareness.

Your Name

NUMEROLOGY

PERSONALITY PROFILE

Trevor Washington



www.your-website.com



THE POWER AND LIMITATIONS OF NUMEROLOGY

Numerology is an art thousands of years in the making. Like any Metaphysical science, it hinges on the understanding that all things are interconnected. Your numerology profile analyzes the connection between the letters and numbers linked to you, revealing your talents, strengths, weaknesses, emotions, preferences, and a range of other qualities.

To use an analogy, think of numerology's nine single-digit numbers as nine tubes of paint, each a distinctly different color. Imagine you are a work of art painted by a master artist who used every color available to create your image. The depiction is unique and complex: a fusion of bright and subdued colors, shapes and shadows, light and reflection, subtle and bold textures. The deeper you look, the more you perceive and appreciate the many layers that makeup who you are.

A comprehensive numerology profile, along with your honest reflection, can be a powerful self-help tool in identifying underlying traits and new possibilities. The better you know yourself, the more control you have over life's changes and the greater your potential for a successful, fulfilled life. Numerology is not infallible, nor does it promise to answer every question, but I feel confident you will find many things to contemplate in the following pages.

You are unique, and so is your Profile. We hope you enjoy your reading.

YOUR PERSONALITY PROFILE

Conventional numerology readings focus on two aspects of your chart: You and Your Future. Numerologist Hans Decoz' Profiles take a different approach by adding a third angle, Your Path. Just as your DNA determines your physical body, a blueprint of your personality is an inborn part of you from the very beginning.

Your Profile begins with insight gleaned from your name because that is where we learn WHO you are. It describes the talents, strengths, and other distinct characteristics you were born with. Just as your physical body grows and changes with time, so does your personality. Your personal evolution begins at the moment of your birth. From that point on, the choices you make, the goals you set, your environment, opportunities, challenges, the influence of others, and a thousand other factors alter who you become.

Your Personality Profile begins with an overview of the combined influence of the core numbers derived from your name: your Expression, Heart's Desire, and Personality. This has never been done before and is perhaps the most dramatic improvement in Decoz' latest work.

I hope you will take time to read and reflect on the information below. Many aspects become clearer with time and during subsequent readings. I wish you the best on your journey.

Hans Decoz

SUMMARY

Birth Name is Timothy Mitchell Washington
Short Name is Trevor Washington
Birthdate is April-10-1973
Reportdate is March-04-2021

Your Core Name Numbers

Your Expression is 16/7

Your Heart's Desire is 34/7

Your Personality is 45/9

Your Heart's Desire - Personality Bridge is 2

The Path You're On

Your Life Path is 7

Your Birthday is 10/1

Your Life Path - Birth Day Bridge is 6

Your First Challenge is 3

Your Second Challenge is 1

Your Third Challenge is 2

Your Fourth Challenge is 2

The Path And You

Your Life Path - Expression Bridge is 0

Your Maturity is 14/5

First Period Cycle is 4

Second Period Cycle is 1

Third Period Cycle is 2

First Pinnacle Cycle is 5

Second Pinnacle Cycle is 3

Third Pinnacle Cycle is 8

Fourth Pinnacle Cycle is 6

Specifics About You

Your Rational Thought is 3

Your Balance is 2

You have a Hidden Passion of 2,5

You have a Karmic Lesson of 0

Your Cornerstone is T

Your Subconscious Self is 9

Your Physical Plane Of Expression is 18/9

Your Mental Plane Of Expression is 48/12/3

Your Emotional Plane Of Expression is 48/12/3

Your Intuitive Plane Of Expression is 10/1

How Your Current Name Affects You

Your Minor Expression is 12/3

Your Minor Heart's Desire is 18/9

Your Minor Personality is 39/12/3

PART I: ABOUT YOU

Your Personality Profile is based on your full name at birth, your current name, and your date of birth. Your full name tells us who you are; think of it as your numerology-DNA. Your date of birth reveals your path and the patterns of your personal growth.

We start this report by looking at the most important numbers derived from your full name to throw light on who you are as a person.

HOW YOUR NAME NUMBERS STACK UP

Trevor, we begin by taking a quick snapshot, a look at the influence and meaning of the three core numbers derived from your name. Your Expression number is the sum of the value of all the letters in your full name at birth. Your Heart's Desire is the sum of the vowels. Your Personality number is the sum of the consonants. These three numbers are closely linked and influence one another.

All the numbers derived from your name reflect YOU. They are a blueprint of your talents, shortcomings, character traits, and other qualities. You should realize that this is a limited perspective. Later chapters focus on the challenges and opportunities you will encounter on your path, and attributes you may acquire as time passes.

This first chapter is like a glance from a distance, followed by three chapters that explain the meaning of each number in more detail. We will gradually build a more complete picture of the complex and unique individual you are.

Your Core Name Numbers are 7, 7, 9

Trevor, your Expression and Heart's Desire number is 7, and your Personality number is 9 – all odd numbers. People with odd numbers tend to be dreamers and idealists. However, this does not lessen their potential to make great things happen or keep them from becoming successful and happy.

You may experience awkwardness during your childhood; the 7 can seem a little different from other kids. You were probably shy and thoughtful. Even today, your intelligence likely takes a different path from most people. Both the 7 and the 9 rely on abstract, intuitive methods. You are more liable to take detours and explore esoteric philosophies and fantasies. You are a mental surrealist. You are hungry for knowledge, but do not always learn through conventional methods.

The two numbers differ in other areas as well. Although your 9 Personality can make you seem aloof and distant, it is perfectly capable of working with large groups of people. It can even be a good motivator or

educator. Politicians, lawyers, and public speakers often carry the 9 in this position. The shy, introverted 7 prefers a smaller environment, and one that is less public.

Both your 7 Expression and 7 Heart's Desire are inward focused and may be somewhat awkward socially. The 7 is highly intelligent and a good abstract and intuitive thinker. The main difference between them is the 7 usually prefers to work (and often live) alone. It enjoys a solitary environment. This does not suit the 9; although it may appear a little distant, the 9 is not a loner at all.

In spite of their differences, there are areas where the 7 and 9 dovetail nicely. Although social skills are probably not your strongest asset, both numbers manage to draw people into your circle. You likely prefer the fringe element to those who keep to the middle. Associating with eccentrics and people taking the road less traveled works for both the 7 and the 9. Additionally, the 9 has tolerance and empathy for all cultures and walks of life.

Bringing the attributes of the 7 and 9 into harmony may be a challenge, but it offers very interesting career possibilities. Many people who have a 9 among their name numbers focus on helping others. They are often involved with non-profit community or global concerns, such as humanitarian or environmental programs. This satisfies the intellectual 7 as well. Neither influence is likely to choose a job that requires interacting with people for business purposes, such as retail or real estate. The arts would please the 9. This could include architecture, fashion or interior design, and creative professions that rely heavily on spatial perspective or combining materials and color.

Regardless of the career path you choose, it will probably be a little offbeat. You might be drawn to religion, metaphysics, medicine, art, or psychology (particularly if it is clinical or research oriented).

Romance may be an awkward pursuit for you; you probably prefer to connect more on an intellectual level. Chances are you rarely notice when someone is interested in you, even if that person has been close to you for some time. You are loyal and able to commit, but the basis needs to be intellectual. Ideally, there should also be a shared connection regarding spiritual, metaphysical, or ethical concerns.

Now let's look at each of your core numbers individually.

THE EXPRESSION

Your Expression number, calculated from your full name at birth, reveals the orientation or goal of your life. Some numerologists refer to this as your Destiny number because it represents a lifelong target at which you are aiming. Thus, the Expression number, to some extent, reveals the person you aim to be.

Your Expression is the most influential of the three characteristics that make up who you are. It is also the number with the most influence on your choice of career, although other aspects are important as well.

Your Expression is 16/7



You are gifted with an analytical mind and an enormous appetite for the answers to life's hidden questions. You have a strong interest in exploring scientific matters, philosophy, and even mysticism. You possess clarity and persistence in your search for truth. You can be a great researcher, educator, and philosopher. You are driven by a desire for knowledge and truth. You must learn to discriminate between illusion and reality, but you are well equipped for this task. Your fine mind offers insight into the veiled mysteries of life. You also possess a considerable amount of perspective. Somewhere inside you, you are aware of a peaceful place that you call upon during difficult times.

You need time to be by yourself. Too much social interaction causes you stress. You need your privacy and a place that can be shut off from the hustle and bustle of life. You tend to keep your thoughts to yourself and are secretive. Unless your 7 expression is balanced by extrovert characteristics (usually revealed by the numbers 1, 3, 5, and 8), your introversion may pull you deeply within yourself, even cutting you off from others.

You have a strong dislike of the superficial and mundane. You are often surprised by the lack of understanding or depth of knowledge of others, many of whom do not take the search for knowledge as seriously as you do. This can cause you to be critical of others, and even cynical about life in general. The more cut off from others you become, the more hidden are your motives. Once you develop understanding of people and life, your advice and counsel will be sought by those around you who need your wisdom.

You love to specialize your knowledge and develop great depth within your field. You are a perfectionist. You should complete your studies early in life and not be driven too hard by a desire to be successful. Let things come at their own pace, be open to opportunity, but remember your rewards, satisfaction, and contentment come from a higher source.

Sevens can be distant and aloof. When dominated by their darker characteristics, they can be unfaithful, dishonest, and cruel. Contemplation, meditation, and the softer, finer vibrations of life can restore your sense of harmony and keep you on the path to peace and balance.

You have a logical mind. Your analytical skills cause you to approach a problem in a detached, surgical kind of way. Researchers, analysts, investigators, inventors, technicians, scholars, lawyers, bankers, watchmakers, priests, philosophers, theologians, and administrators in some scientific or technical field are among the vocations 7s are drawn to.

THE HEART'S DESIRE

The Expression number described above points to a more productive side of your life. Your Heart's Desire reflects a deeper, inner you; it suggests an underlying urge, your true motivation, and the general intention behind many of your actions. It reveals the environment and lifestyle you prefer, as well as your likes, dislikes, and the type of people you are drawn to. Consequently, it dramatically influences the choices you make in life.

It makes sense that the vowels of your name are the foundation for your Heart's Desire. Vowels are the peaks and valleys of a language. Notice how vowels leave your mouth in a free-flowing breath. Try it: Aaaa.... Eeee.... Oooo.. Consonants though, are cut off either at the beginning or in the end.

You might say that it is in the flow of your breath that you express your deeper self.

Your Heart's Desire number is 34/7



You love knowledge, study, and insight. You value the gifts of your mind, which you use to great advantage to penetrate the mysteries of life. You study things in-depth. You search beneath the surface of things. You abhor shallow judgments or opinions.

You have a natural gift for analysis and research. Once you have grasped the facts of a subject, your creativity and abstract approach lifts your thinking beyond the rudimentary to the philosophical. You have a theoretical mind, but rather than indulge in fantasies or idle thought, you prefer to base your theories upon scientific facts. You enjoy mental and physical puzzles -- figuring them out, taking them apart, and putting them back together.

Some people may perceive you as cool or aloof. You are somewhat introverted; you may feel slightly removed and even a little different. The fantasy of the hermit or monk engaged in a life of study and meditation appeals to you.

In relationships, you tend to keep things business-like and impersonal. You prefer to talk about the facts of a given situation, rather than the cloudier issues of emotions and personal feelings. You distrust feelings -- both your own and those of others. The whole emotional realm strikes you as unreliable, and a bit unnecessary. Your inability to fully understand the emotional aspect of life is your Achilles heel. You are so rational that the unpredictability of the heart frightens and surprises you.

Your challenge is to trust. You need to share your heart with someone. This is a courageous step for you but will result in enormous growth and satisfaction.

The advice here is to make a true connection with another human being. Without it, you may marry out of convenience or to fulfill social expectations, but it will not lead you out of loneliness. The more removed you are from people, the more you risk isolation, bitterness, and a cynical attitude toward life. This choice represents a true crossroads in your development. By sharing yourself with others (without compromising your independence and need for privacy) you can cultivate your enormous charm and share your understanding of life. You are a natural teacher and advisor. And the wealth of knowledge you will accumulate in life is meant to be shared with others.

This is not to say that you must compromise on your need for privacy or time spent alone to contemplate life. These are natural aspects of your personality, which are essential to your growth. These characteristics

should not be threatening to your spouse but must be understood as fundamental to your being.

You are blessed with a great reserve of intuition, which can be cultivated by regular meditation and contemplation. Your "inner voice" is your greatest guide and friend. You are idealistic and have high expectations for yourself. Learn to balance your serious nature with regular doses of fun. Your intelligence and cultivation make you charming and distinguished in appearance. As you get older and more comfortable with your identity, people are naturally attracted to you. They see your wisdom, your deep understanding of life, and the refinement you radiate.

THE PERSONALITY

The consonants of your full name at birth are the foundation of your Personality number, which is a little like a narrow entrance hall to the great room that is your true nature. It's the outer layer of your personality, the part you feel comfortable sharing. With time and trust, you invite others into the deeper aspects of your nature.

Your Personality number serves as a censoring device in terms of what you send out, as well as whom and what you allow to approach. For this reason, your Personality is usually narrower and more protective in its definition than the real you. It also gives an indication of how others perceive you.

Your Personality number is 45/9



You have an impressive and aristocratic bearing. No matter how tall you are, you appear noble and upright. You are very much in control of the image you send out to others. Many actors, dancers, and other performers have a 9 Personality Number.

You are elegant, graceful, and charismatic. Many admire you. You have the kind of stature that pulls people to you or repels them intensely. Some are jealous of you and may seek to belittle you. You may encourage this to some extent by the amount of arrogance you radiate. This is a caution for all 9 Personalities -- they are sometimes aloof and hold themselves above the world. Your challenge is to come down to earth with your fellow man.

Conversely, you have a great compassion for humanity and want to dedicate yourself to improving the lot of others. You are better when dealing with the trials of the many than the trouble of a single person. You are more capable of working on the grand scale, addressing the needs of society, than on a one-to-one basis.

You are kind and sympathetic, helpful and compassionate. Behind the controlled and calm facade, you are sensitive, vulnerable and emotional.

You have excellent taste. There is a good deal of artistic talent in you that shows in your home environment and your clothing. You tend to see yourself as a guardian of society, a benevolent leader, guiding and

directing your community toward a better world.

THE HEART'S DESIRE - PERSONALITY BRIDGE

A Bridge number is based on the numerical difference between two closely related aspects in your chart. It is the gap you need to "bridge" in order to create a more harmonious bond between the two areas.

The following Bridge number connects your Heart's Desire and Personality numbers. It suggests things you can do to help your deeper self to align more closely with your personality; the "outer" you that is apparent to others.

With a little exaggeration, you could say that your Personality number is somewhat like your mask; it's a more superficial aspect you reveal to the world. You can imagine how much more comfortable and less inhibited the experience of life becomes when you can align your authentic self with the personality you show to the world.

Your Heart's Desire - Personality Bridge number is 2



Be more sensitive to the needs and expectations of others. Do not rock the boat too often but keep the peace and try to make things run smoothly. You have to use your ability to influence others with gentle diplomacy, instead of confrontations. Be more cooperative.

PART II: THE PATH YOU ARE ON

If there was ever a moment of transformation, it was the moment of your birth. In that instant, you stepped into a new reality - the reality of human life and human consciousness. Even at that moment you were a person with your own unique character, as unique as your DNA. The previous chapters focused on YOU, the person you are, as revealed in the letters of your name. It is now time to look at your Path, the road you walk through life, using the numbers found in your date of birth.

Your first breath marked the beginning of your journey on the road we call your Life Path. It makes sense, then, that the most important number in your numerology chart comes from the date of your birth. Your Life Path number gives a broad outline of the opportunities, challenges, and lessons you encounter throughout your life. It also reveals the strengths, specific talents, and characteristics you were given to help you overcome challenges and evolve into the best you can be.

THE LIFE PATH

Your Life Path number is considered the single most significant information available in your Personality Chart. It is derived from the total of all numbers found in your date of birth. However, it is important to keep in mind that the aspects described in the next few chapters will either complement, supplement, or sometimes weaken the attributes revealed in numbers derived from your name.

Your Life Path number is 7



You are the searcher and the seeker of the truth. You have a clear and compelling sense of yourself as a spiritual being. As a result, your life path is devoted to investigations into the unknown and finding the answers to the mysteries of life. You are well-equipped to handle your task. You possess a fine mind; you are an analytical thinker, capable of great concentration and theoretical insight. You enjoy research and putting the pieces of an intellectual puzzle together. Once you have enough pieces in place, you are capable of highly creative insight and practical solutions to problems.

You enjoy your solitude and prefer to work alone. You need time to contemplate your ideas without the intrusion of other people's thoughts. You are a lone wolf, a person who lives by his own ideas and methods. As a result, close associations are difficult for you to form and keep, especially marriage. You need your space and privacy, which, when violated, can cause you great frustration and irritation.

When your life is balanced, however, you are both charming and attractive. You can be the life of a party and enjoy performing before an audience. You enjoy displaying your wit and knowledge, which makes you attractive to others, especially the opposite sex. But you have distinct limits. While you are generous in

social situations, sharing your attention and energy freely, you are keenly aware of the need to "come off stage" and return to the solitude of your lair. You associate peace with the unobtrusive privacy of your world. Therefore, intimacy is difficult for you, because you guard your inner world like a mother lion does her cubs.

All this privacy and aloneness can cause isolation and loneliness, however. You can be aware of emptiness in your life, a part of you that yearns for company and close companionship that may be unsatisfied. If isolation is brought to the extreme, you can become cynical and suspicious. You can develop hidden, selfish motives, which people may sense and may cause them discomfort around you.

You must guard against becoming too withdrawn and independent, thus shutting out the love of others and keeping you from experiencing the true joy of friendship and close companionship.

You must especially watch out for selfishness and egocentricity, thinking of yourself as the center of the universe, the only person who really matters. Social contact gives perspective on yourself and on life, while too much isolation can make you too narrow and even shut off from the rest of the world. Secretly, you may feel jealous of the easy relationships formed by others; you may perceive others as less inhibited than you, or freer to express themselves. You may harshly criticize yourself for not being more gregarious, powerful, or capable of greater leadership.

Your challenge in life is to maintain your independence without feeling isolated or ineffectual. You must hold fast to your unique view on the world, while at the same time being open to others and the knowledge they have to offer. With your abilities to learn, analyze, seek out answers to life's important questions, you have the potential for enormous growth and success in life. By the time you reach middle age, you will radiate refinement and wisdom.

Pythagoras loved the seven for its great spiritual potential.

THE BIRTH DAY NUMBER

The day you were born bears great significance in understanding who you are and where your talents lie. Your day of birth indicates special talents you possess. It gives us an indication of the approach you will take toward the goals, opportunities and obstacles you encounter on your Life's Path.

Your Birth Day number is 10/1



You are a leader. You have a great ambition and a strong drive for success. You are highly independent and dislike the restrictions of having to work with others. You easily become frustrated with the routine. You are a pioneer, a gambler, and an initiator. You are very creative; you possess a keen and rapid mind.

You have excellent business instincts and with the appropriate training can run large organizations and big businesses. You use information for a specific purpose. Knowledge is a practical tool in your hands; you dislike information or knowledge for its own sake. You possess a broad vision and a great capacity for motivating others. You have great will power that will be tested, especially during the years 28 to 56. But your opportunity for accomplishment is enormous.

You are generally open to the ideas of others, but you can be extremely stubborn and hardheaded once you become attached to your plans.

Avoid laziness and procrastination. You are given to anger and frustration and tend to force the issue at times when things are not developing as rapidly as you would like.

Your determination, will power, and inventiveness are the keys to your success and will likely bring you much personal reward and financial success.

THE LIFE PATH - BIRTH DAY BRIDGE

Your Life Path and Birthday numbers are closely connected and influence each other. This Bridge explains how you can make the connection between them more harmonious.

Your Life Path - Birthday Bridge number is 6



Your 6 Bridge indicates that your Life Path and Birth Day numbers can be brought into more harmonious affiliation simply by sharing more openly with those you are close to. Try not to hide your emotions. The bond you have with those you love is a major asset; it inspires and motivates you and will be of great help in overcoming obstacles.

When you communicate to others how you are feeling, you find clarity and become more decisive which are great aids for overcoming obstacles.

CHALLENGES; YOUR FIRST CHALLENGE

You face four specific Challenges in your lifetime. For many of us, the same challenge is repeated, while others have four distinctly different lessons to learn.

These Challenges place you in situations that require you to face the particular lesson at hand. This provides an opportunity for you to learn or better integrate personal traits that will benefit you during the lesson, and throughout your life.

The four Challenges in your chart will influence you during the periods of your life listed below.

The duration of your First Challenge usually lasts from birth until age 30 to 35.

Your First Challenge is 3



You are your own worst critic. You suppress your individuality and creativity. Each time you want to make an impression, you doubt yourself beforehand, and criticize yourself ruthlessly afterward. Your criticism of yourself is far more severe than anyone else's. As a result, you tend to play it safe by staying on the surface, indulging in superficialities. You rarely express what goes on deep inside of you; instead, you cover up your feelings with humor or perfunctory remarks.

You often feel alone and lonely. Your fear of social interaction causes you to strain conversation by making too many jokes and forced joviality. It may help you to find a creative outlet for your imagination, possibly through writing, painting, singing or dance.

At the bottom of the challenge is an effort to bring out your true self. You will learn to truly value your own creative talents above anyone else's judgments. This must be viewed as a process of individuation, in which you become a whole human being, independent and free of the need to conform to others.

THE SECOND CHALLENGE

Your Second Challenge is in place from approximately age 30 through 55.

Your Second Challenge is 1



You must learn to be independent. You will be forced to stand up for yourself and your rights. You will be faced with situations in which you will have to choose between standing up for what you think is right versus giving in to another person's demands. You will have to struggle to strengthen and know your own will power. You will have to learn to be firm and trust your judgment. Don't run with the crowd, be an individual.

This whole lesson represents the frontiers of your consciousness. Therefore, you will have to experience much trial and error, sometimes exploding with bursts of aggression, other times being intimidated and letting frustration and anger build within you until you are ready to act on your deepest instincts. You will learn your own set of values; you will develop into an individual with original and innovative ideas.

THE THIRD AND MAIN CHALLENGE

This Challenge carries much weight and will be felt throughout your life. For that reason, it is also called the Main Challenge.

As you master this challenge and incorporate its positive aspects into your character, your life gradually

feels more in control. There is a chance for great reward implicit in this challenge. In short, it may offer the secret to your success.

Your Third and Main Challenge is 2



You are overly sensitive and too aware of other peoples' expectations. You suppress yourself to avoid feeling conspicuous. You can be overwhelmed by self-consciousness. You fear gossip about you. As a result, you become inhibited. All of this results in a suppression of your own individuality and uniqueness. You yearn to blend into the crowd.

You let your own feelings and emotions play too big a role. Your hypersensitivity causes fear, timidity and lack of self-confidence. And you experience unnecessary fear and emotional turmoil. Little things seem disproportionately difficult to overcome and sometimes have a paralyzing effect. Jealousy can cause much pain and misunderstanding.

These negative aspects of the challenge actually spring in part from positive characteristics you possess, especially your acute awareness and intuition. You are an antenna for other people's feelings; you know before a word is spoken how they feel.

You lack the inner strength to maintain your own center and try to conform to the prevailing emotional atmosphere.

This challenge makes you understanding and compassionate; you have an enormous empathy for the inner turmoil of others and can do much good for people with emotional problems.

THE FOURTH CHALLENGE

Your Fourth Challenge is most strongly felt during the latter part of your life, beginning at approximately age of 60.

Your Fourth Challenge is 2

Trevor, you are repeating your Third Challenge

PART III: YOUR PATH AND YOU

We have focused on the letters of your name and the numbers from your date of birth. We will now look at numbers in your chart derived from the combination of both your name and the date of your birth. Acquiring the attributes described in the next few chapters will help smooth your progress. As you learn more about yourself, you may begin to recognize traits you were previously unaware of.

THE LIFE PATH - EXPRESSION BRIDGE NUMBER

This Bridge has the potential to "close the gap" between the Life Path and the Expression numbers. The chapter explains how you can make your talents, strengths, and specific abilities (your Expression number) more readily available and fitting to your goals and personal growth.

Your Life Path - Expression Bridge number is 0



Your bridge number is 0 (this is one of the few places in a numerology chart that can produce a zero). It suggests you could be more accepting of what you perceive as your shortcomings and indicates a tendency to be unnecessarily hard on yourself, possibly declining opportunities due to a lack of confidence. Although this will diminish somewhat with age, you could benefit from taking an honest look at the underlying causes of this harsh self-assessment. Think about this the next time an opportunity presents itself.

In your favor, your Life Path and Expression numbers are the same, which is considered fortunate. This suggests you possess the ability to make real progress in the area of personal growth, as well as progress on your chosen path.

MATURITY NUMBER

Your Maturity number indicates an underlying wish or desire that gradually surfaces at around age 30 to 35. A direction begins to emerge as you gain a better understanding of yourself. With this self-knowledge comes a greater awareness of who you are, and the direction you want to set for your life.

Your Maturity number is 14/5



There is no slowing you down as you enter maturity. Your influence grows as you become more dynamic and versatile. You now begin to realize your lifelong goal of freedom. There will be travel and adventure, exciting and unexpected events. Your originality, creativity, and verbal abilities grow stronger. You will become interested in areas you

never before considered. You may tend to become restless and impatient. You may quickly lose interest or become bored with projects that progress slowly. Perseverance is tested, especially because you may find it easy to abandon things that no longer hold your interest. You will have to work to maintain your concentration, discipline, and focus. Do not scatter your energy over to many interests. This is especially the case with people who have several 5s in their chart, especially among the core numbers.

For those with few fives, the increasing ability to adapt to change and the willingness to take risks provides much spice to life.

PERIOD CYCLES; YOUR FIRST PERIOD CYCLE

Like most stories, there are three distinct stages of your life. Your First, Second, and Third Period Cycles come from your month, day, and year of birth respectively. Together they form the foundation of your Life's Path.

The First Cycle begins in childhood and lasts through your late 20's. It's a quest for knowledge and identity while you cope with the powerful forces that are present in your environment. These forces include your parents and the socio-economic conditions of your family, for example.

The Second Cycle covers the middle period of your life, bringing about the slow emergence of your individual and creative talents. This cycle begins in the early and mid-30's while struggling to find your place in the world. The late 30's, 40's, and 50's, bring a greater degree of self-mastery and influence over your environment.

The Third Cycle starts approximately age 55, and represents a flowering of your inner self as your true nature comes to fruition. It is during this period that you have the greatest degree of power and self-expression.

Your First Period Cycle runs from birth until your mid 30's.

Your First Period Cycle is 4 and lasts until age 29



This first period is likely quite demanding and frustrating. The need for discipline and effort is present in all aspects of your life. Trying to live up to the demands sometimes finds you frustrated by bad timing or a lack of opportunities.

This is a time to search for something to sink your teeth into. However, restrictions placed on you by your personal life may not support your need for space and freedom. This can have the effect of either turning you against most forms of discipline - making you rebellious and contrary - or becoming dependent on it, prompting you to choose a career where control from outside forces dominates (such as the military or a very tightly run institution).

SECOND PERIOD CYCLE

Your Second Period Cycle runs from your mid 30's until your late 50's.

Your Second Period Cycle is 1



The middle years of your life (approximately ages 30 to 60) find you on an intense path of personal growth. You are required to adapt frequently to the many ups and downs in your life.

When 1 rules the second Period Cycle it focuses on self-empowerment. To facilitate this, situations occur that force you to dig deep to find the courage required to face your challenges. You have love and support, but circumstances will often demand that you rely heavily on your own strengths.

Fortunately, throughout this approximately thirty-year period, you often have confirmation that your gut feelings are correct and feel you are moving in the right direction. You will likely find yourself in a leadership position, strengthening your self-confidence even more.

THIRD PERIOD CYCLE

Your Third Period Cycle covers the later part of your life, starting in your early 60's.

Your Third Period Cycle is 2



Trevor, the later part of your life finds you increasingly intuitive, relying more on your heart than on your mind. You become less inhibited, as you gradually lose the fear of showing your true and deeper self. You are more direct and less hesitant to express your feelings. You rely on your gut feelings more often. "If it feels right, it probably is," could become one of your stronger convictions. You are better at working with people and you become a master in the fine art of persuasion.

Younger people, and others, are drawn to you - especially those who live with difficult circumstances and those who could use your help. You may well discover a talent you have not previously considered, perhaps in the visual arts.

PINNACLE CYCLES; YOUR FIRST PINNACLE CYCLE

Although Pinnacle Cycles and Period Cycles are both derived from your date of birth, they differ in the way you experience them. Period Cycles, described above, reflect internal stages of growth. Pinnacle Cycles represent the external influences you encounter in life.

Pinnacles reveal general conditions and events you experience during each period, such as your environment, social conditions, relationships, and changing circumstances. Pinnacles reveal how you might respond to these influences and how they will affect your ever-evolving personality.

The transition from one Pinnacle to the next is usually strongly felt. You begin to feel the transition from one Pinnacle to the next approximately two years in advance. The latter part of that two-year period can be particularly strong. You will likely make life-altering decisions, such as marriage, a job or career change, or major changes in your personal makeup.

Knowing and understanding your approaching Pinnacle number prepares you for the changes ahead. Perhaps the most strongly felt change is the transition from First to Second Pinnacle, which usually takes place in your late 20's or early 30's (the exact date depends on your Life Path number). This is usually a difficult transition but once crossed, provides a clear sense of direction and a firmer sense of identity.

Your First Pinnacle cycle is 5



This is a period that will teach the realities of freedom and expansion. You will travel great distances, meet many new and interesting people, experience many adventures, and essentially come to know the world. You are in a period of accelerated experimentation and learning. Experience is your teacher. Your ability with words is greatly increased. You can write and speak with ease. You are also able to successfully promote yourself. In fact, this is the source of much adventure; new opportunities for work, travel, and exotic experiences present themselves with regularity.

Your challenge is to prevent yourself from becoming a rolling stone. You need to ground yourself in a particular discipline, career, or relationship. This will not limit your freedoms so much as give you a base for operation. Otherwise, you may find yourself skipping from one meaningless job to the next, one superficial relationship after another. You can also fall victim to the abuse of food, alcohol, sex, or drugs. You must accept limitations as a necessary base for your freedom. Freedom cannot exist without limitations, otherwise you would be without identity, and without existence.

You may fear being anchored or tied down, which can cause you to skim the surface of a pursuit you enjoy, or important relationships. You must come to know the true meaning of freedom, which is unconditional love. You give your love and energy without the condition of holding on to a place, a person, or an occupation; and you expect the same in return -- to be loved for what you are, rather than someone who belongs to another. There is a highly spiritual path offering itself that requires detachment without loss of love. Many turn away from this and instead choose to maintain a superficial relationship with the world, or with other people.

You must cultivate your talents, especially your verbal and writing abilities. You are likely a gifted salesperson, or promoter.

THE SECOND PINNACLE CYCLE

Your Second Pinnacle Cycle lasts nine years and tends to have a considerable influence on your productive/professional life.

Your Second Pinnacle cycle is 3



This is a highly creative period. Your self-expression is greatly enhanced. Your creative and artistic talents will peak. You should do everything possible to refine these abilities and make the most of them. Many under the 3 Pinnacle are drawn to writing, the theater, singing, and dance. Your chances of success are also heightened. Hard work in any artistic field that one has a talent for can result in much reward. This is also a highly social and emotional time. You attract friends and admirers with your charm and gregarious nature. You have the ability to inspire and motivate people. Your upbeat energy causes people to want to work with and for you.

This is a lucky period, as well. You can overcome problems with considerably less effort than in the past. All of this can lead to self-indulgence and lack of productivity. Life is a little easier, which can make you less vigilant. You need focus and discipline. Under the influence of this Pinnacle, hard work is the key and the challenge to making the most of your opportunities.

Be careful of impulsive behavior or doing things on a lark. You must know your limits during this period. Be careful of your money; balance your accounts. Guard against disorderly thinking and behavior. Otherwise, you may do things you regret or simply squander away so many opportunities.

Children born under this Pinnacle must be disciplined and kept from being spoiled. An early education in the arts will inspire the child to make the most of his or her artistic talents.

THE THIRD PINNACLE CYCLE

Your Third Pinnacle Cycle also lasts nine years. Like your Second Pinnacle, its effect is felt primarily in your career or business environment.

Your Third Pinnacle cycle is 8



Trevor, under the influences of this Pinnacle, you will have greatly enhanced talent for dealing successfully with business and finances. This is a time of material growth, a time of expansion and reward. It is the cycle of harvest. The 8 Pinnacle also increases your personal power. You have sound judgment and vision. In fact, this is the basis of your financial success. People sense your power and effectiveness. They defer to you much more easily and look to you for answers. This makes it easier for you to use power without having to be a bully or force your way through situations. They perceive your able-ness and want to join you in your vision. Others have faith in you.

You will be able to organize large enterprises. Problems do not threaten you so much as provide a challenge. You yourself sense your enhanced personal powers and feel a growing sense of stability and centeredness. You will be capable of influencing matter in an almost magical way. As a result, you are extremely goal oriented, moving toward the realization of your dreams with confidence and clarity. Your challenge during this period is to maintain a hold on your human and spiritual values. You must remain balanced between heaven and earth. There will be enormous temptations to make money and status your only priorities, excluding the more human or immaterial matters entirely. This will undoubtedly lead to losses. You are being tested and instructed in the real value of money -- it's natural place in life. If money is placed on a high altar, overshadowing all other facets of life, you will become its slave. If you are balanced in your approach to money, and have proper perspective, this can be a truly rewarding period, both materially and spiritually. That is the true promise of the 8.

The number 8 symbolizes the balance between the finite and infinite, matter and spirit. It offers a great opportunity to grow.

THE FOURTH PINNACLE CYCLE

Your Fourth Pinnacle Cycle lasts for the rest of your life.

Your Fourth Pinnacle cycle is 6



Under this Pinnacle you will be very involved with family, friends, and your community. You will face an increase in responsibilities and duties, but you have a greatly enhanced sense of balance and perspective that allows you to handle emotional issues well. Your family demands much of your attention. Matters involving spouse and children require much security, love, and sacrifice. You are the centerpiece of your family, the one people come to for solace and understanding. You may feel an increased burden, as you carry the cares of many. You will experience a deep sense of being needed.

This Pinnacle is full of love, closeness, and warmth, but you must rise to the challenges that close relationships bring. Trevor, you must settle and bring harmony to personal conflicts between others. You are often the only one with perspective in a conflict. It is as if you are the keeper of justice, bringing understanding and compromise to situations that are polarized.

Under the influences of this Pinnacle -- especially at its outset -- people are often married or start families. Children are born, in-laws come into your life. You are the nucleus of a little world. You must maintain your dignity. This is a period that makes it easier to sacrifice, but you can overdo it, becoming a doormat for others to step on simply to maintain a degree of peace. Know your limits and maintain healthy relationships.

This is a fine period for growth in business and financial matters. You attract people with resources who can help to further your personal goals. Moreover, you are balanced in your approach to business affairs. This can bring many rewards.

Trevor, your heightened sense of harmony and your genuine compassion makes you an excellent counselor and healer, especially if you already have native talent in any of these areas.

Personal health matters can also surface, causing you to reflect on diet, exercise, and other health habits. Your desire to help others is also increased. But this can lead you to poke yourself into situations where you do not belong or delve too deeply into other people's personal affairs. Be careful not to meddle or interfere.

The 6 Pinnacle is a time of progress and growth as a full human being. You are capable of developing yourself in many different directions -- as a loving mate and parent; a sound businessperson; and as a pillar of your community. The time requires the balance you possess, since you can easily stretch yourself in too many directions and ultimately feel burned out by the demands in your milieu.

PART IV: SPECIFICS ABOUT YOU

Although the following chapters deal with less dominant aspects of your chart, they are more narrowly defined and specific in the ways they affect you.

THE RATIONAL THOUGHT NUMBER

Your Rational Thought number comes from combining the sum of your birthday number with the sum of your first name. It reveals the style or process you use when making choices or considering a problem. Are you a structured, logical thinker or do you ponder a question in a creative, abstract manner? Do you daydream or stick to deductive reasoning?

Your Rational Thought number suggests the general approach you take in your thought process.

Your Rational Thought number is 3



You are creative, but your thoughts tend to be scattered. You jump around inside your head without much focus. You come up with solutions that reveal an illogical approach, yet they often work. As it applies to you, rational thinking is a contradiction. You project, interpret, and analyze your projects and problems in a manner that often leaves others flabbergasted.

However, you are unbeatable when it comes to shining new and original light on issues; often coming up with unique answers. You have this Rational Thought number in common with a number of famous and original thinkers throughout history.

THE BALANCE NUMBER

Your Balance number provides guidance on how to best deal with difficult situations.

People experience a variety of internal responses to life's challenges. Some step back from difficult situations to ponder a course of action while others withdraw to avoid uncomfortable emotions. Some explode with anger but allow the outburst to pass quickly while others let their feelings linger.

Very often, these are conditioned responses that emerge without thought or analysis. With maturity and self-development, we incorporate new and more effective methods of handling situations we encounter.

Your Balance number is 2



Use tact and diplomacy. Be less emotional. Be courageous in your approach to the solution you seek, rather than backing away from problem because you fear confrontation. Work hard to diffuse tension; your innate talent is to find a mutually satisfying solution to all. You are willing to compromise.

Be more optimistic and lighthearted. Trevor, try not to blow problems out of proportion. You are overly sensitive and have to work to be more balanced.

Balance and harmony are there for you the minute you apply yourself to any problem. You can be the peacemaker.

THE HIDDEN PASSION

Your Hidden Passion reveals specific strengths or talents that are available to you, such as a specific field of expertise or (as the name implies) a passion. Metaphorically, this talent or passion may be seen as having a power all its own to help shape your life.

Having a talent demands that you nurture and express it. Your Hidden Passion gives you the desire to develop and express your particular ability. In this way, it shapes your personality and guides your life.

In the graphic below, each square represents the number value of the letters 1 through 9. The top left square tells you how many ones are found in your full name at birth. The one next to it shows how many twos are in your name, and so forth. The number that is found most often in your name is your Hidden Passion. There can be more than one.

Your Hidden Passion number is 2

You are highly considerate, sensitive, and intuitive. You seek peaceful and pleasant environments. You work hard to establish harmony among your peers and co-workers. You work well in groups, often serving as the peacemaker. You may appear shy and timid and although you like people there is an inner fear, you dislike noise and roughness. You are committed to your work and perform your job with a high degree of competency, patience, and persistence. You are a magnet for information. You are often one of the pillars of any organization. People naturally rely upon you.

You tend to worry too much about trivial details and can waste time on petty affairs. You may be too sensitive and easily hurt; your feelings can get in the way of your sound judgment.

You have a good ear for music and rhythm and an appreciation for the arts. You love beauty in your environment. You have fine and delicate taste.

Your Hidden Passion number is 5

You love travel, change, and new challenges. You are highly adaptable and versatile. You have a talent for languages and are generally good with words. Writing, promotion, and public relations work suit you perfectly. You are resourceful and original. You have a good sense of humor and a quick tongue.

You are sensual and a bit impulsive. You love to satisfy your senses, which can get you into trouble. Overindulgence in food, drink, sex, and drugs are common among people with too many 5s -- six or more.

Your desire for freedom is extremely strong and it will take effort and discipline to stick with whatever it is you started. There is a tendency to give up a project or situation prematurely. Trevor, you may be interested in too many things, which can make it hard for you to apply yourself to one area successfully.

Commitment in relationships and your work is fundamental to your happiness. You may tend to wander from person to person, job to job, making depth of relationship or deep expertise difficult.

KARMIC LESSONS

Karmic lessons are recognized by the absence of certain letters in your name and describe areas we are weak in that require recognition and effort to overcome.

The letters in your name point to talents and abilities that you possess; tools that are available to you. Missing letters imply tools that are unavailable, they must be learned and mastered during your lifetime.

You can have more than one Karmic Lesson or, if every number is represented your name, you don't have any.

Although you may feel you have learned to overcome one or more of your Karmic Lessons, you will continue to be challenged by them throughout your life.

Your Karmic Lesson is 0

You don't have any missing numbers in your name, therefore, you don't have a Karmic Lesson.

When you don't have a Karmic Lesson, your life's challenges and obstacles described under the chapter for Challenges, as well as chapters discussing Bridge numbers, tend to be a bit more intensified.

THE CORNERSTONE

The first letter of your first name gives an additional indication of your character, particularly in the way you approach opportunities and obstacles. This first letter is called your Cornerstone.

Your Cornerstone is T



You are dynamic and live a hustle, bustle kind of life. You may have to force yourself to slow down sometimes. You like to expand and enlarge your world continuously.

You can be aggressive when you are committed to an undertaking or relationships. Wat

THE SUBCONSCIOUS SELF

Your Subconscious Self is based on how many numbers are represented in your name, and indicates your ability to make the most of your talents and opportunities, especially when you face new, challenging, or even dangerous circumstances.

Your Subconscious Self number is 9



You are somewhat impersonal and may be difficult to get to know. You are not demonstrative of your affections, though you often have deep feelings and great compassion. You are competent and controlled in any situation.

You have no specific Karmic Lessons and are therefore not as vulnerable to Life's ups and downs as others.

PLANES OF EXPRESSION; THE PHYSICAL PLANE

You experience life on four different levels: physical, mental, emotional, and intuitive. Your Planes of Expression indicate how you function on each of these planes.

Your physical plane links you to the material world.

Your mental plane, like the emotional and intuitive, perceives the invisible world; the realm of thought and reason.

Your emotional plane is preoccupied exclusively with feelings.

Your intuitive plane gives you access to the insight and knowledge that comes effortlessly as if placed at the doorstep of your mind.

In each category, the number of letters, and their numerical value, gives an indication of which Planes of Expression are stronger in you and which are weaker. Each of us is dominated by one or two of the first three planes. The physical and mental are the most widely used, although a name dominated by emotional letters is not uncommon. The intuitive plane is usually the least utilized. A name dominated by intuitive letters is extremely rare but having no intuitive letters in a name does occur. This does not mean a lack of

intuition but points toward a tendency to ignore or distrust intuitive insights.

The Physical Plane represents the physical letters in your name.

Your Physical Plane of Expression is 18/9



You have a strong presence. You are charismatic and have a dramatic flair in your personality, which may direct you to the theater.

You are also drawn to politics, publishing, promotion, and public service -- any career that requires a certain amount of time before the public. You are attracted to doing things on a large scale.

You are a humanitarian. You are concerned about the wellbeing of society. You have a great deal of compassion, tolerance and generosity. You are highly idealistic and a bit of a dreamer. You are not particularly practical, however. Very often, you are not understood by others, and sometimes considered indifferent and aloof.

In some way, you want to please everyone and tend to give promises that may be impossible to keep.

If you develop your abilities, you have a significant chance to become famous.

THE MENTAL PLANE

The Mental Plane is based on the mental letters in your name.

Your Mental Plane of Expression is 48/12/3



Trevor, you are extremely artistic, creative, and a bit flamboyant. You are attuned to fashion, interior and architectural design. You have a talent for designing office space and landscaping. However, you can be scattered mentally, having thoughts pop in and out of your mind seemingly at random. You need to develop discipline and focus.

THE EMOTIONAL PLANE

It is not uncommon for a person to have a name dominated by emotional letters.

Your Emotional Plane of Expression is 48/12/3



You are very romantic. You are highly creative and imaginative. You fantasize about your perfect "other": a White Knight on a horse, or a beautiful princess. Your response to painful emotional situations -- especially in childhood -- was to create a fantasy world to which you escaped. You may still be doing that as an adult, perhaps to your detriment. Reality lacks the romance and excitement of your fantasies.

You can be disorderly and disorganized, however. You can be rather moody. You likely have much artistic talent, especially in writing, acting, or singing.

THE INTUITIVE PLANE

A name dominated by Intuitive letters is extremely rare. It is, however, not at all uncommon not to have any intuitive letters.

Your Intuitive Plane of Expression is 10/1



You are highly intuitive with flashes of insight. You probably attribute most of your thoughts to your mental capabilities, but in fact your insights come from another, higher resource.

PART V: HOW YOUR CURRENT NAME AFFECTS YOU

The influence of the short name (the name you use to introduce yourself, including your last name) is minor in comparison to your full name. Interestingly, the short name often compensates in some way for numbers, and their related characteristics, that are missing or out of balance in the full name.

THE MINOR EXPRESSION

Your current name forms the basis of your Minor Expression number. It is usually the first and last name you commonly use to introduce yourself (not necessarily the name you received at birth).

The influence of your short name is minor in comparison to your full name. Interestingly, the short name often compensates in some way for letters or numbers missing in the full name.

The name you currently use, also affects how you feel about yourself.

If a name change takes place later in life for marital or for professional reasons, it adds or subtracts certain qualities. It can also focus and intensify existing characteristics or latent talents.

Your Minor Expression is 12/3



Your short name increases your capacity to enjoy life. It boosts your optimism, cheerfulness, good taste, and an interest in sports. You communicate more easily, and your sense of humor is enhanced. You are inspiring company, often motivating and uplifting others. Your artistic ability -- especially your facility with words -- is increased.

The three is a happy-go-lucky number, which, on the negative side, can make you avoid difficulties and try to find the easy way out of challenges.

THE MINOR HEART'S DESIRE

The vowels of the name you currently use to introduce yourself are the basis of your Minor Heart's Desire number.

Your Minor Heart's Desire is 18/9



The shortened version of your name broadens your outlook on life. It makes you more compassionate, socially oriented, and concerned for the welfare of humanity. Your Minor Heart's Desire increases your idealism, and capacity for self-sacrifice toward a higher goal. You want to make a difference in life.

You may be more likely to hold yourself aloof and thereby making it harder to find the personal love you need.

Your appreciation for the arts is increased, and any artistic talent you may have is enhanced. You may want to become more of a teacher and are attracted to knowledge that will further this ambition.

THE MINOR PERSONALITY

Your Minor Personality is based on the consonants of your current name and reflects, at least to some extent, how you think, or hope, others might perceive you.

Your Minor Expression is 39/12/3



Many men with a 3 Personality are usually handsome; women often strikingly beautiful. Your vibration is full of life. You are uplifting, inspiring, and charming.

Do not let your charm be an incentive to play too much. Work at developing deep and lasting relationships. You must avoid scattering your attention for popularity. You can be flippant about commitments and may dramatize or exaggerate. Your wit can cause you to rely too much on superficial, humorous conversation.

