

YOUR COMPANY

YOUR COMPANY NAME

12345 Main Street
Anytown, TX 12345
USA

+1 1234567890

www.your-website.com

Dear Fellow Numerology Enthusiast

You can write your own introduction here.

It is suggested to keep it short, but you have about a page.

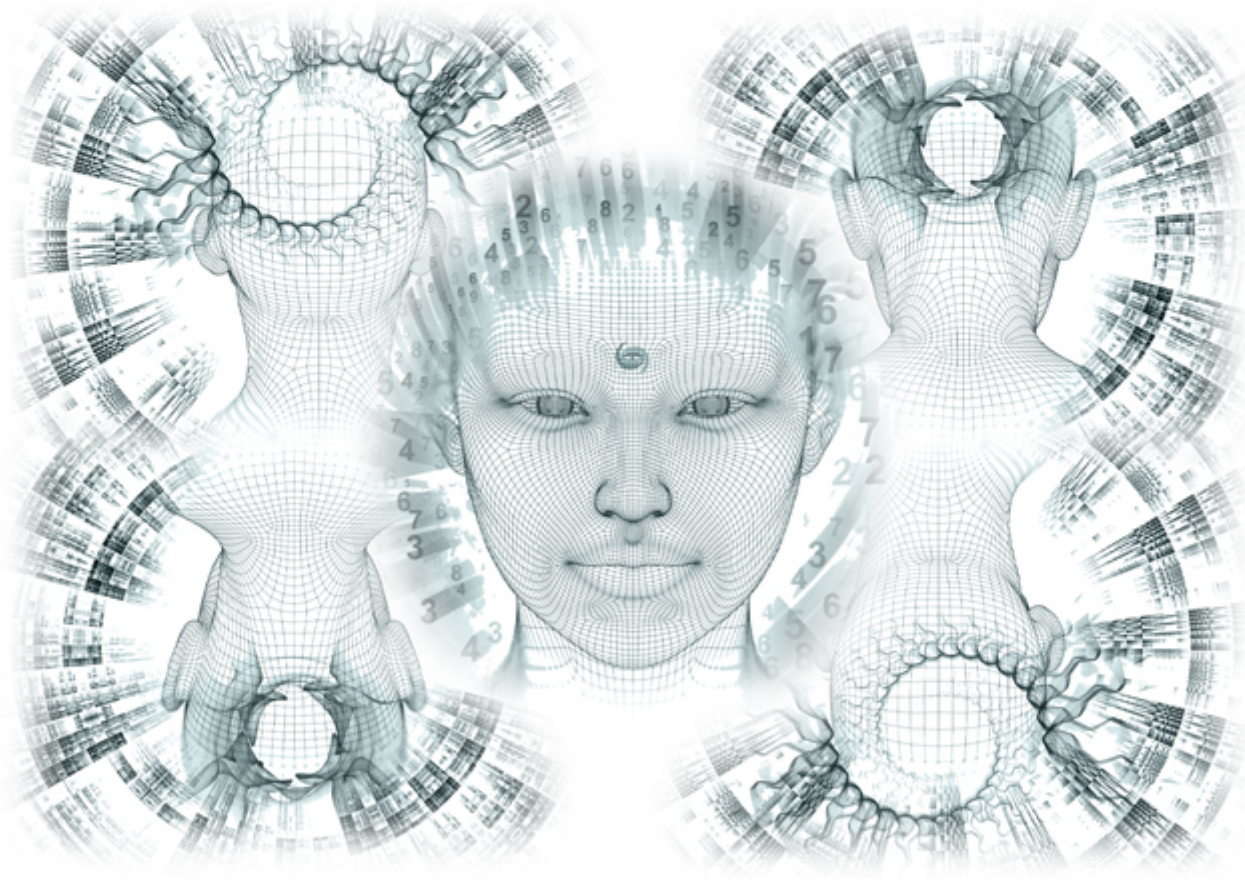
I hope you will find this report beneficial on your on-going search for self-knowledge and self-awareness.

Your Name

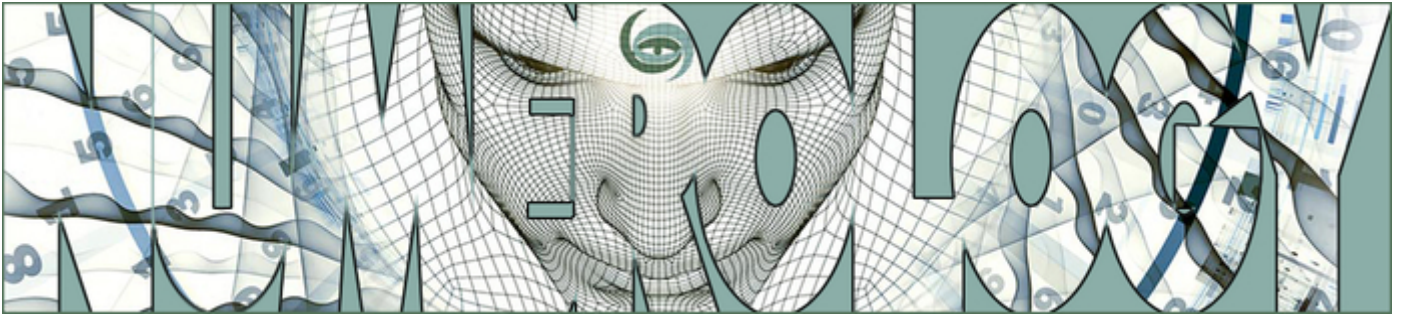
NUMEROLOGY

FAMILY TREE NUMEROLOGY
Ancestral Influences

Vanderplas



www.your-website.com



ABOUT YOUR FAMILY TREE REPORT

Your personalized Ancestral Influences Report analyzes your given name at birth and the name of the ancestors you choose to explore. Last names are an important part of your Numerology chart. They add letters and numbers to your Karmic Lesson and Hidden Passion charts and are the sole influence of your Spiritual Transit. This Transit is an important cycle reflecting your inner/spiritual evolution and that of your forebears. Your Ancestral Report provides a glimpse into characteristics you have inherited from those who came before you.

ANCESTRAL INFLUENCES AND NUMEROLOGY - ANCESTRAL DNA

Numerology is an ancient system for studying patterns and cycles. One such pattern demonstrates the enduring influence of the last name carried from generation to generation. A family name can remain unchanged since its origin. However, it sometimes loses or gains a letter or two or is altered entirely due to changing circumstances, such as immigration. These changes are reflected in your ancestor's evolutionary path. When their name changed, their lifestyle, environment and personality did as well. These traits are a component of your family's evolving ancestral "DNA" passed down through the years.

In most cultures, children adopt the last name of their father, and an in-depth analysis of this name can be quite revealing. However, to complete the ancestral picture, the mother's maiden name (on both sides of the family) is just as important. Looking back through both branches of your lineage will help you detect which side of the family you resemble most closely, and which traits you share. In short, you are at the end of a long line of predecessors, having inherited a wide range of characteristics. Your name and the names of your ancestors reveal centuries of accumulated energies and influences that are part of your makeup today.

EXAMINING NAMES

A name can be mined for sources of insight in a variety of ways. We consider the sum of the vowels, the sum of the consonants, and the sum of all letters combined. Additionally, each vowel and consonant is examined separately and in the order of appearance. Information is also gleaned from the absence of certain numbers as well as those appearing most frequently. The Spiritual Transit cycles provide valuable information as well. Every ancestor who carried your last name went through the same Spiritual Transit cycles during the same ages you did.

The custom of a woman assuming her husband's name has a considerable impact on her personality and experiences. In doing so, she quite literally surrenders part of her identity and inner/spiritual path. This does not necessarily create discord and often affects the relationship positively. However, it is something to think about if you are contemplating marriage or divorce. Considering the effect, a name imparts, a divorced woman might consider reclaiming her maiden name to recoup the part of her identity forfeited during the marriage. The decision to adopt a partner's name requires the same forethought for same sex marriages.

Let us move on to your reading.

Hans Decoz

SUMMARY

Birth Name is Janssen
Short Name is Jonathan Janssen
Birthdate is February-18-1980
Reportdate is March-04-2021

Your Core Name Numbers

Your Expression is 1

Your Heart's Desire is 6

Your Personality is 4

The First Vowel is a

The First Consonant is J

Your Heart's Desire - Personality Bridge is 2

SOURCES OF STRENGTH, SURVIVAL AND STAMINA

To understand your relationship to your ancestors, it is important to recognize that each aspect analyzed is focused on a specific facet of your ancestors' makeup. For example, in one chapter you might learn some of your ancestors likely lived on the darker fringes of society, while the next chapter suggests an innate desire for honor and justice motivated many of their choices. While this appears to be a contradiction, it probably isn't. Think of it as the "Robin Hood syndrome" where thievery and honor occupy the same heart; we all possess contradictions in our personality and the approaches we take to various issues.

This chapter centers on the dominant source of strength that helped your ancestors survive and prosper.

The 1 ruled your ancestors' sources of strength, survival, and stamina



Your last name indicates there was a tendency among your ancestors to view themselves as separate from and independent of others, even if they lived in small communities or an environment that required them to bond closely with others in their clan. This probably caused friction at times, but it would have also helped some of them move into leadership positions. The dynamic, bold strength that appears to have been a common denominator among your Janssen ancestors may well be a source of strength for you even today.

However, the negative side of this energy can sometimes turn into aggression. It is likely some of your forebears lost their tempers easily, and their belligerence and intensity may have gotten them into trouble on occasion.

YOUR ANCESTOR'S MOTIVATIONAL DRIVE

This aspect describes what motivated your ancestors and what attracted and interested them.

The 6 reflects your ancestors' motivational drive



Many of your ancestors with the name Janssen may have been influential within their communities as healers, teachers, or protectors of the less fortunate. Their numbers tell us they often sacrificed to help others. Many may have chosen politics or were important within their communities as advisors and leaders. Some may have become high-level soldiers, perhaps even generals, as the motivation to climb social and career ladders came naturally to them. The vowels in the name Janssen indicate most of them preferred the role of defender over that of aggressor, freedom fighter over conquer, and liberator over oppressor.

DEALING WITH DIFFICULTY

The following chapter reveals what can best be described as your ancestors' fortitude i;½ the ways they dealt with adversity, obstacles, illness, or poverty, or simply how they held fast against the tide of changing circumstances. These characteristics helped your ancestors overcome odds many could not and were a determining factor in the choices they made and lifestyles they adopted.

Your ancestors' ability to deal with difficulty was ruled by the 4



Many of your forebears had their feet firmly planted in reality. They tended to be grounded and careful, and more often than not managed to stay out of the line of fire, often without compromising their beliefs. In general, they were a sturdy lot, strong and brave, and yet they probably chose farming over soldiering. The strength that carried them through many generations was founded in a powerful sense of belonging. An underlying feeling that "all is right with the world," is reflected in the kind of self-confidence that cannot be taught. This confidence likely inspired others to confide in them and trust their advice.

A SHARED PASSION AMONG YOUR ANCESTORS

This section reveals a specific trait or dominant quality held by many of your predecessors. Although this report is built using the last name only, it reveals one area where a characteristic was likely shared almost universally among all with that surname, regardless of the first and middle names.

Your ancestors' shared passion



Many of your ancestors were competitive, driven individuals. Some may have been quite aggressive.

CAREERS AND TALENTS

This section reflects attributes or a mindset that likely attracted your ancestors to a particular profession. Although other variables in the chart may have altered these influences and lead them to different choices, they probably had some interest in the trades and professions mentioned below. Let's take a quick look at the key qualities and attributes reflected in your predecessors'½ last name.

Your ancestors' aptitude to certain careers and talents is reflected by the J



Philosophical, yet down-to-earth. This aspect suggests your Janssen ancestors may have been explorers, fishermen, traders (import/export), or inventors.

WEAKNESSES, CHALLENGES, AND TRIUMPHS

This chapter looks at a probable weakness that was relatively common among your ancestors. It would have been necessary for them to overcome this shortcoming to be successful in life. Keep in mind that this is a negative influence, and not every predecessor was affected by it. This aspect is often diminished or completely eliminated if a first or middle name balances it.

The 2 represents your Ancestors ability to overcome weaknesses



The number in this area of your chart suggests a good many of your Janssen ancestors were overly sensitive and affected by the expectations of others. Due to this tendency they may have suppressed themselves to avoid feeling conspicuous. They would have been more likely than others to be the target of gossip or false accusations, partly because they fit the role of victim. When faced with real or perceived criticism, many would have retreated rather than confront their accuser directly. In extreme cases, their hypersensitivity may have caused fear, timidity, and even paranoia.

At least some of your Janssen forebears were likely to face this type of challenge, but it was also balanced by the positive traits that accompany being sensitive: high intuition, excellent negotiating skills, and a harmonious nature. They had an antenna for other people's hopes, feelings, and expectations - a trait good politicians are born with.

HOW YOU COMPARE WITH YOUR ANCESTORS

This chapter looks at your name's numerological traits compared to those of your ancestors. Your ancestral influence rating is divided into four categories: Very High (16 through 20 points), High (11 through 15 points), Average (6 through 10 points), and Low (1 through 5 points). The ancestral influence rating shows how closely your traits resemble those of your ancestors. These results are neither good nor bad, but simply another way to identify your 'genetic code' similarities to each ancestor.

Your Compatibility is 5

Jonathan, it appears that you have little in common with this branch of your family tree. On a scale from 0 to 20, the compatibility rating with your Janssen ancestors is between 0 and 5. However, even when there are few similarities, those that exist can be important. For example, it is not uncommon for someone to have a career similar to their ancestors's™ in a branch they share little with otherwise. This may give the appearance of a close connection when, in fact, it is superficial. It is likely that your personal traits match a

different branch of your family tree more closely. Keep in mind this comparison is a small part of your makeup; your full name at birth and your date of birth hold much more weight and offer considerably more insight into who you are.

